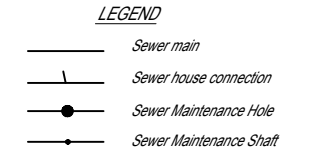


NOTES:
 • All new mains DN150 PVC-U SN8 unless noted otherwise.
 • All property connections are DN100 PVC-U



REGISTERED SURVEYOR'S CERTIFICATION
 We, Queensland Surveying Pty Ltd (ACN 604 671 374) Cadastral Surveyors, hereby certify that the vertical and horizontal locations and dimensions shown on this plan are a true and correct record and were located by survey.
 Delegate (signature) 6152 23/11/2017
 Registration ID Date

ENGINEER'S CERTIFICATION
 I, DARRYL HAYTER
 being a Consulting Engineer and duly authorised representative of: -
EMPOWER ENGINEERS AND PROJECT MANAGERS
 hereby:-
 # certify the information contained in this drawing is an accurate "as constructed" representation of the works;
 # accept responsibility for the "as constructed" information contained in this drawing; and
 # acknowledge the "as constructed" information contained in the drawing may be relied on by the Moreton Bay Regional Council and others.
 Certification for Stage 19 by D. Hayter on 24/11/17
 For: EMPOWER ENGINEERS AND PROJECT MANAGERS rpeq.5694

A1	D	23/11/2017	UPDATE	EJM	EJM	
	C	10/11/2017	UPDATE	EJM	EJM	
	B	2/11/2017	UPDATE	EJM	EJM	
	A	1/9/2017	PROGRESS PLOT	EJM	EJM	
	INDEX	DATE	REVISIONS	DRAWN	CHECKED	PASSED

DRAWN	EJM	23/11/2017
CHECKED	EJM	23/11/2017
PASSED	-	-
INITIALS		DATE

veris
 BRISBANE 071 988 4700
 MACKAY 071 481 2811
 PROSERPINE 071 498 1722
 CAIRNS 071 481 8722
 veris.com.au
 ACN 604 671 374
 Queensland Surveying Pty Ltd, a Veris Company



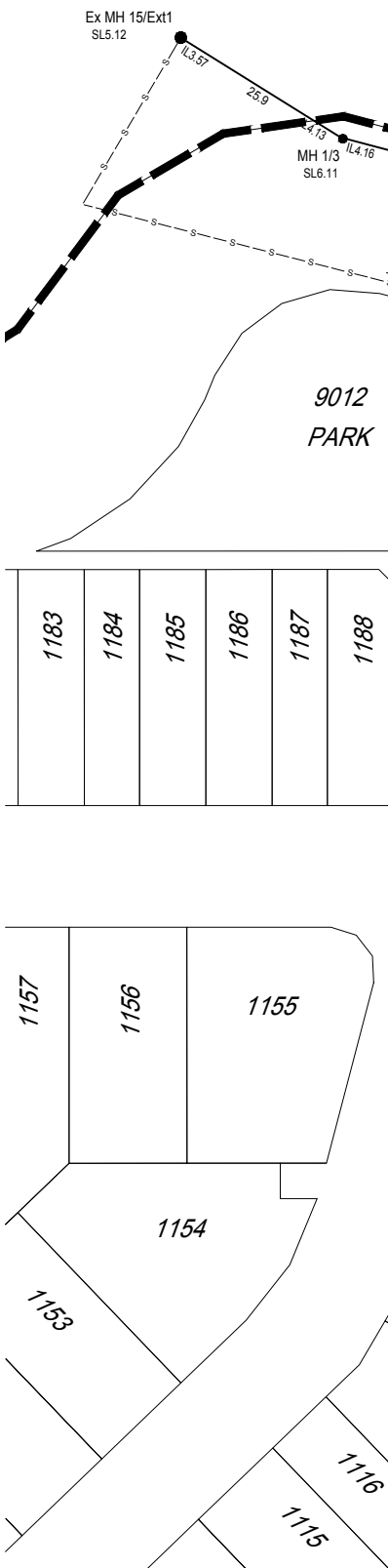
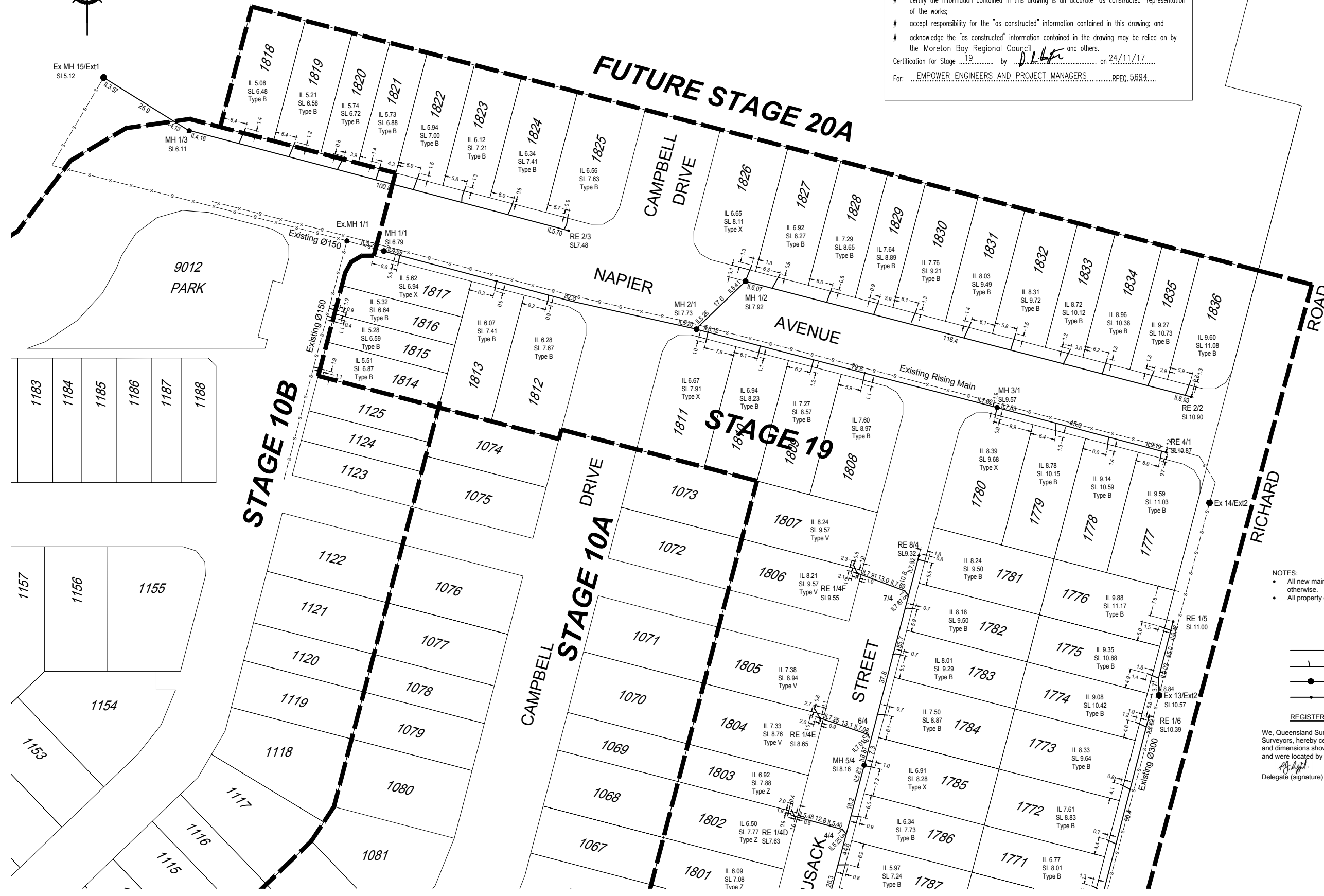
Unitywater
 AS-CONSTRUCTED
 SEWER
 STAGE 19, CAPESTONE

SCALE	1:500
SHEET	1 OF 2 SHEETS
DRAWING NO.	30105-190100-AS01
	D C B A



ENGINEER'S CERTIFICATION
 I, DARRYL HAYTER
 being a Consulting Engineer and duly authorised representative of:-
 EMPOWER ENGINEERS AND PROJECT MANAGERS
 hereby:-
 # certify the information contained in this drawing is an accurate "as constructed" representation of the works;
 # accept responsibility for the "as constructed" information contained in this drawing; and
 # acknowledge the "as constructed" information contained in the drawing may be relied on by the Moreton Bay Regional Council and others.
 Certification for Stage 19 by *D.H.* on 24/11/17
 For: EMPOWER ENGINEERS AND PROJECT MANAGERS RPEQ.5694

PM55164



NOTES:
 • All new mains DN150 PVC-U SN8 unless noted otherwise.
 • All property connections are DN100 PVC-U

LEGEND
 — Sewer main
 — Sewer house connection
 ● Sewer Maintenance Hole
 — Sewer Maintenance Shaft

REGISTERED SURVEYOR'S CERTIFICATION
 We, Queensland Surveying Pty Ltd (ACN 604 671 374) Cadastral Surveyors, hereby certify that the vertical and horizontal locations and dimensions shown on this plan are a true and correct record and were located by survey.
[Signature] 6152 23/11/2017
 Delegate (signature) Registration ID Date

A1	D	23/11/2017	UPDATE	EJM	EJM	
	C	10/11/2017	UPDATE	EJM	EJM	
	B	2/11/2017	UPDATE	EJM	EJM	
	A	1/9/2017	PROGRESS PLOT	EJM	EJM	
	INDEX	DATE	REVISIONS	DRAWN	CHECKED	PASSED

DRAWN	EJM	23/11/2017
CHECKED	EJM	23/11/2017
PASSED	-	-
INITIALS		DATE

veris
 BRISBANE 071 948 4700
 MACKAY 071 491 2911
 PROSERPINE 071 4945 1722
 CAIRNS 071 4911 6722
 veris.com.au
 ACN 604 671 374
 Queensland Surveying Pty Ltd a Veris Company



Unitywater
 AS-CONSTRUCTED
 SEWER
 STAGE 19, CAPESTONE

SCALE	1:500
SHEET	2 OF 2 SHEETS
DRAWING NO.	30105-190100-AS01
	D C B A