

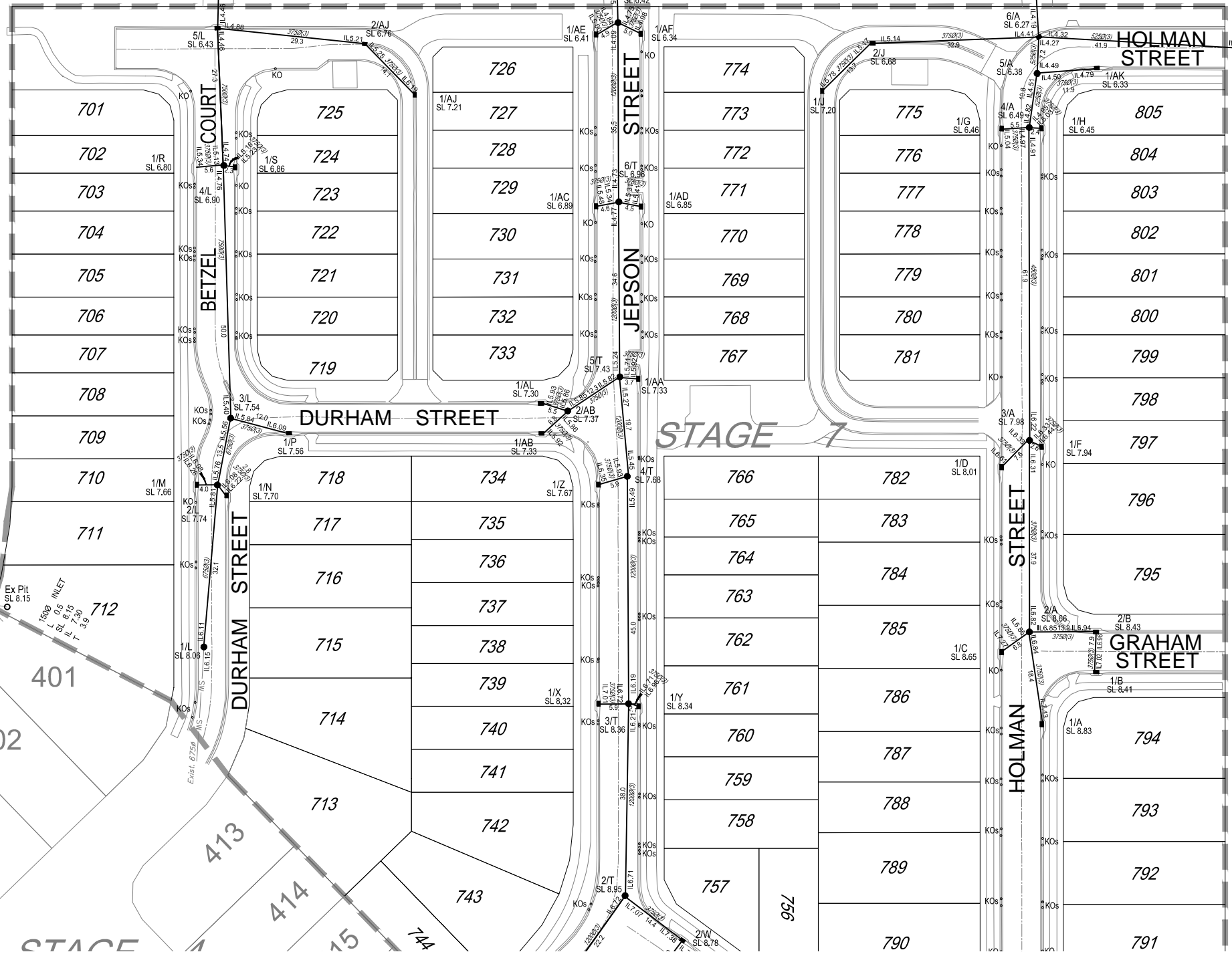


I, Peter Sippel, being a cadastral surveyor and duly authorised representative of Queensland Surveying Pty Ltd hereby:

- certify the information contained in this drawing is an accurate as constructed representation of the works
- accept responsibility for the as constructed information contained in this drawing
- acknowledge the as constructed information contained in the drawing may be relied on by council and others

Certification by *Peter Sippel* on 27/8/15
(Signature) (Date)
for Queensland Surveying Pty Ltd

FUTURE STAGE 8



ENGINEER'S CERTIFICATION

I, David Polden, being a Consulting Engineer and duly authorised representative of: - BMD Consulting hereby:-

- certify the information contained in this drawing is an accurate "as constructed" representation of the works;
- accept responsibility for the "as constructed" information contained in this drawing; and
- acknowledge the "as constructed" information contained in the drawing may be relied on by the Moreton Bay Regional Council and others.

Certification for Stage 7 by *David Polden* on 07.09.15
For: BMD CONSULTING Pty. Ltd. RPEQ 1907

FUTURE STAGE 8

DRAWING REVISIONS		REFERENCE DRAWINGS		DESIGN FILE No.	DESIGNED
REV.	REVISION DESCRIPTION	DRG. No.	DESCRIPTION	CONSTRUCT. No.	DATE
F	Original			SURVEY FILE No. 30105-070100 AD	DRAWN EJM 27/8/15
G	Update			FIELD BOOK	CHECKED EJM
				LOG BOOK	DATE 27/8/15
				LEVEL DATUM	AHD
				DATUM	PM177891

THIS WORK WAS PREPARED BY:
QUEENSLAND SURVEYING PTY LTD



MORETON BAY REGIONAL COUNCIL
CABOOLTURE DISTRICT OFFICE
2 HASKING STREET CABOOLTURE QLD 4510
PO BOX 159 CABOOLTURE QLD 4510
Telephone: (07) 5433 0100
Fax: (07) 5433 4000

**STAGE 7, CAPESTONE
AS CONSTRUCTED
DRAINAGE**

MBRC SUBDIVISION REFERENCE	
DA/29345/2014/V4DU	
No. 1 OF 2 PLANS	
ASCAN GRID NUMBER	REV.
	G

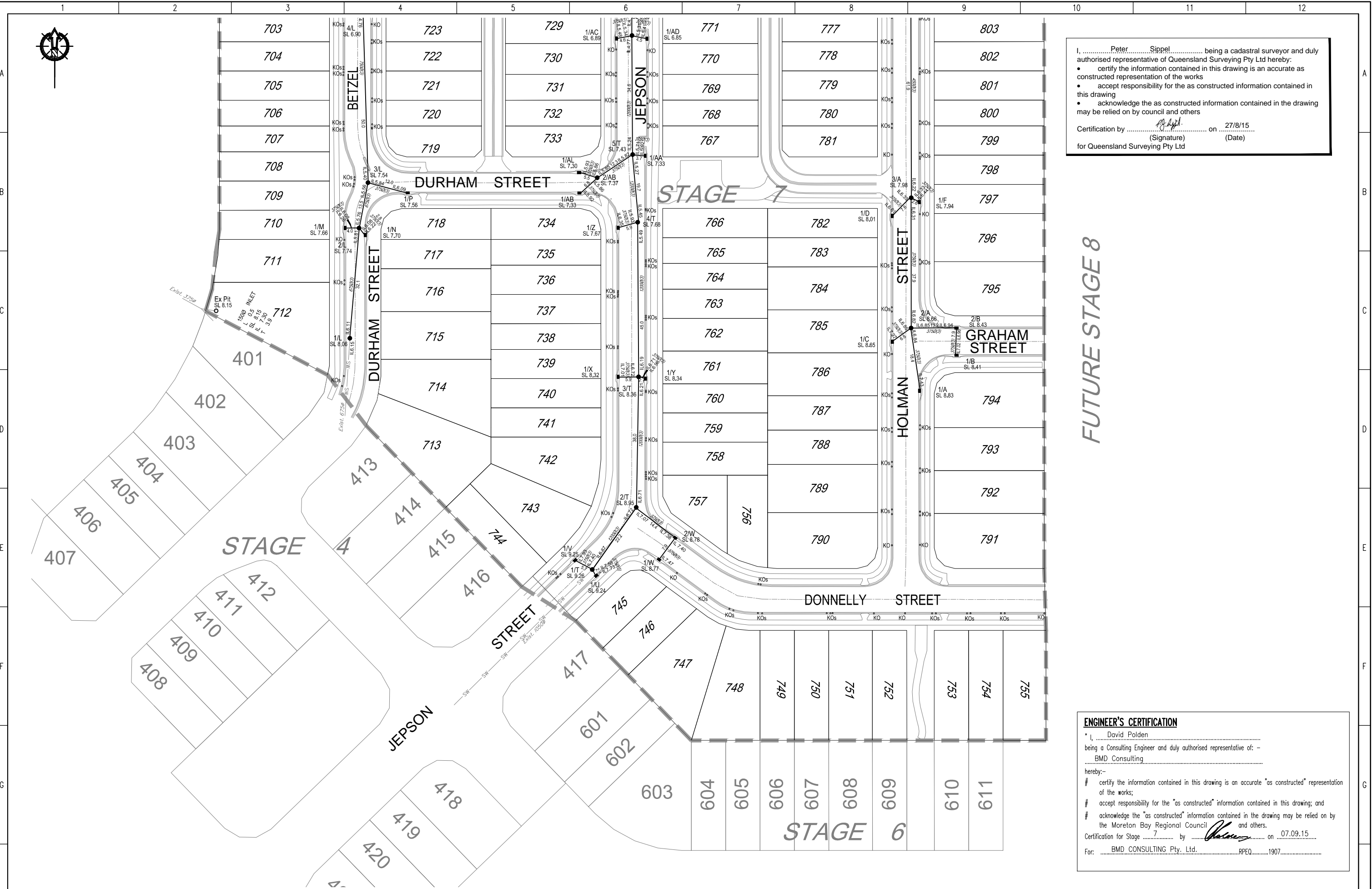
SCALE 1:500 ORIGINAL SIZE A1



I, Peter Sippe, being a cadastral surveyor and duly authorised representative of Queensland Surveying Pty Ltd hereby:

- certify the information contained in this drawing is an accurate as constructed representation of the works
- accept responsibility for the as constructed information contained in this drawing
- acknowledge the as constructed information contained in the drawing may be relied on by council and others

Certification by *Peter Sippe* on 27/8/15
 (Signature) (Date)
 for Queensland Surveying Pty Ltd



FUTURE STAGE 8

ENGINEER'S CERTIFICATION

I, David Polden, being a Consulting Engineer and duly authorised representative of: - BMD Consulting, hereby:

- certify the information contained in this drawing is an accurate "as constructed" representation of the works;
- accept responsibility for the "as constructed" information contained in this drawing; and
- acknowledge the "as constructed" information contained in the drawing may be relied on by the Moreton Bay Regional Council and others.

Certification for Stage 7 by *David Polden* on 07.09.15
 For: BMD CONSULTING Pty. Ltd. RPEQ. 1907

DRAWING REVISIONS		REFERENCE DRAWINGS		DESIGN FILE No.	DESIGNED
REV.	REVISION DESCRIPTION	DRG. No.	DESCRIPTION	CONSTRUCT. No.	DATE
F	Original			SURVEY FILE No. 30105-070100 AD	DRAWN EJM DATE 27/8/15
G	Update			FIELD BOOK	CHECKED EJM DATE 27/8/15
				LOG BOOK	
				LEVEL DATUM	AHD
				DATUM	PM177891

**THIS WORK WAS PREPARED BY:
 QUEENSLAND SURVEYING PTY LTD**

SCALE 1:500 ORIGINAL SIZE A1

MORETON BAY REGIONAL COUNCIL
 CABOOLTURE DISTRICT OFFICE
 2 HASKING STREET CABOOLTURE QLD 4510
 PO BOX 159 CABOOLTURE QLD 4510
 Telephone: (07) 5433 0100
 Fax: (07) 5433 4000

**STAGE 7, CAPESTONE
 AS CONSTRUCTED
 DRAINAGE**

MBRC SUBDIVISION REFERENCE	
DA/29345/2014/V4DU	
No. 2 OF 2 PLANS	
ASCAN GRID NUMBER	REV.
	G