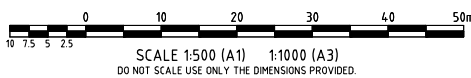
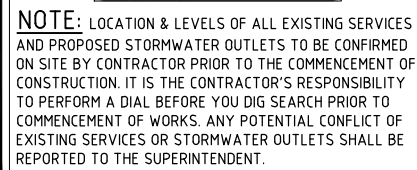
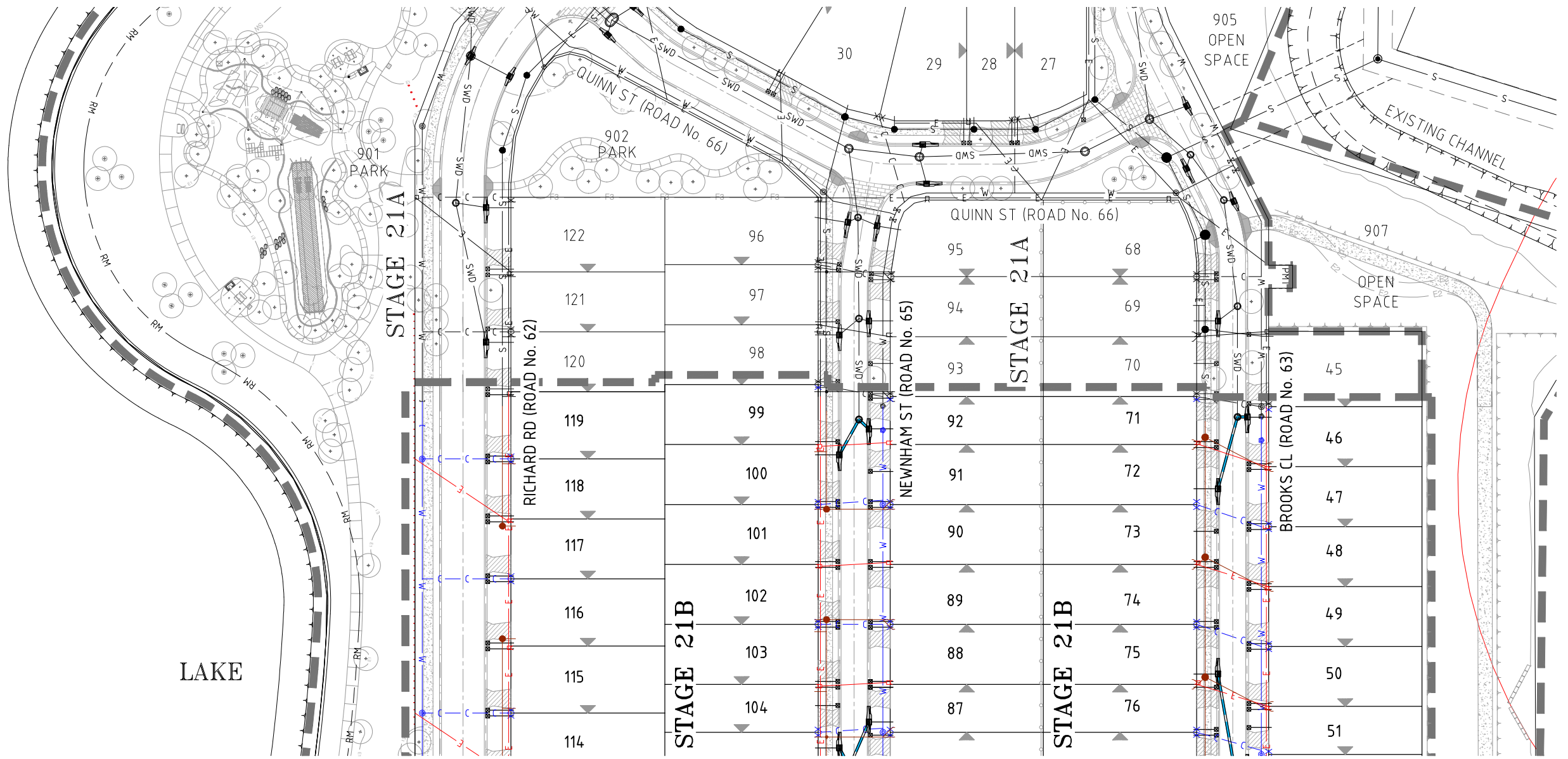



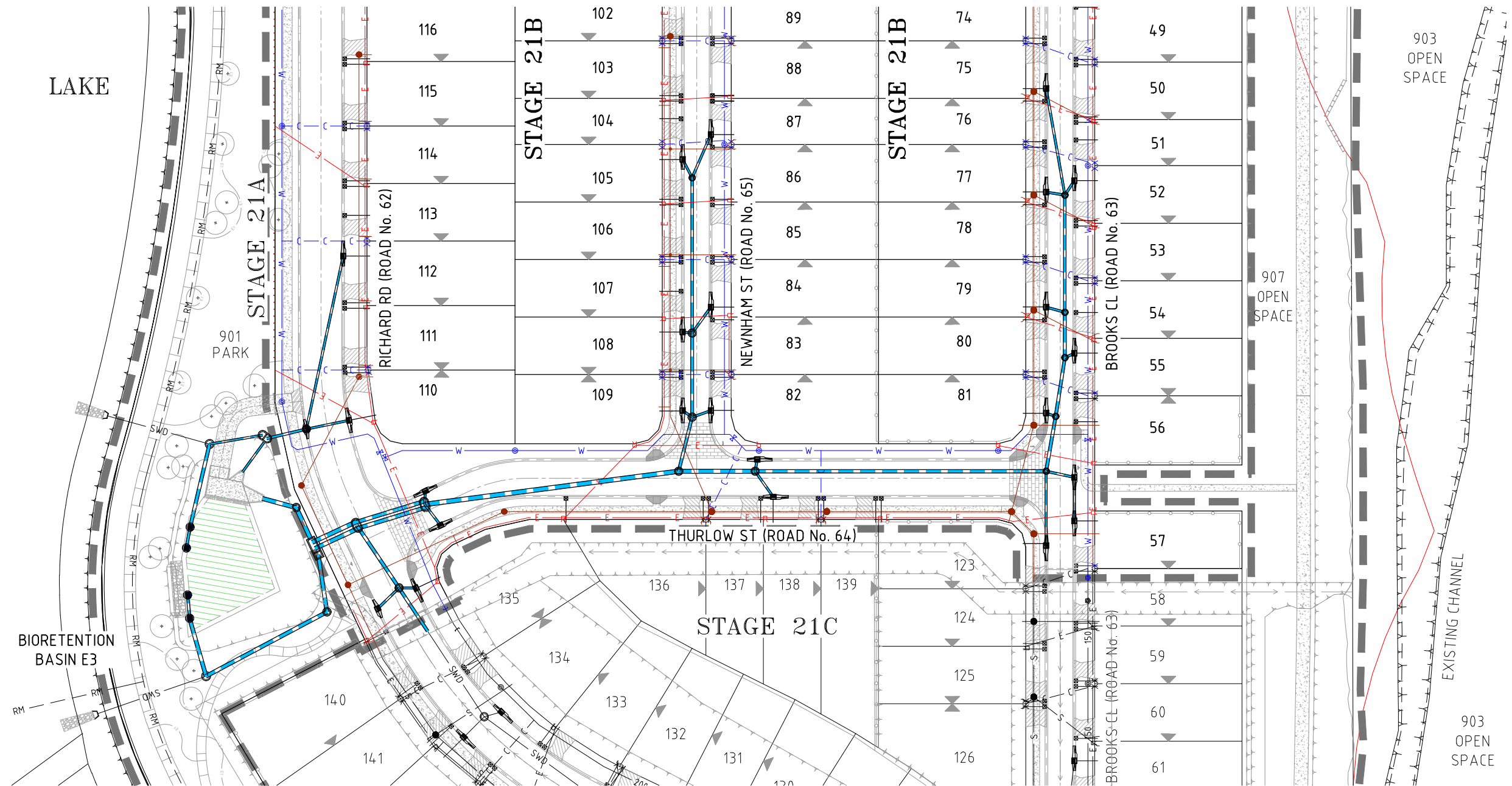
	STAGE BOUNDARY
	LAYBACK KERB & CHANNEL
	UPRIGHT KERB & CHANNEL
	EDGE (FLUSH) KERB
	STORMWATER DRAINAGE
	KERB ADAPTER WITH 100mm DIA ROOFWATER CONNECTION
	2x KERB ADAPTERS WITH 100mm DIA ROOFWATER CONNECTIONS
	100mm DIA ROOFWATER CONNECTION DIRECTLY INTO CATCHPIT
	ELECTRICAL RETICULATION
	SEWERAGE RETICULATION
	WATER RETICULATION
	WATER CONDUITS
	RETAINING WALL
	TABLE DRAIN
	EXISTING/FUTURE STORMWATER DRAINAGE
	EXISTING/FUTURE ELECTRICAL RETICULATION
	EXISTING/FUTURE SEWERAGE RETICULATION
	EXISTING/FUTURE WATER RETICULATION
	EXISTING/FUTURE WATER CONDUITS
	EXISTING SALTWATER EXCHANGE RISING MAIN
	EXISTING RETAINING WALL
	EXISTING TABLE DRAIN
	CONCRETE PATHWAY. REFER IPWEA STD DWG RS-065
	RAMPED PEDESTRIAN CROSSING. REFER IPWEA STD DWG RS-090
	MODIFIED INDUSTRIAL DRIVEWAY CROSSOVER TYPE 1. REFER PRSC STD DWG No. 8-20001
	"ZERO LOT" BOUNDARY
	"ATTACHED LOT" BOUNDARY
	INDICATIVE FUTURE DRIVEWAY LOCATIONS REFER DWG No. B00231-CG206 TO B00231-CG207 FOR DETAILS.
	BIORETENTION FILTER AREA

[illegible]

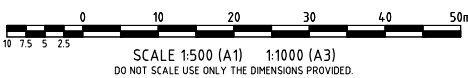
<i>Client</i>	<b>URBEX PTY LTD</b>	<i>Datum</i> <b>AHD</b>	
<i>Project</i>	<b>CAPESTONE STAGE 21B</b>	<b>PSM 38847</b> <b>RL 10.649</b> <b>(MGA) COORD</b>	
<i>Title</i>	<b>COMBINED SERVICES PLAN</b> <b>SHEET 1 OF 2</b>	<b>FOR CONSTRUCTION</b>	
		<i>Project No.</i> <b>B00231-CG204</b>	<i>Rev</i> <b>0</b>

# LEGEND



- STAGE BOUNDARY
- LAYBACK KERB & CHANNEL
- UPRIGHT KERB & CHANNEL
- EDGE (FLUSH) KERB
- STORMWATER DRAINAGE
- KERB ADAPTER WITH 100mm DIA ROOFWATER CONNECTION
- 2x KERB ADAPTERS WITH 100mm DIA ROOFWATER CONNECTIONS
- 100mm DIA ROOFWATER CONNECTION DIRECTLY INTO CATCHPIT
- E ELECTRICAL RETICULATION
- S SEWERAGE RETICULATION
- W WATER RETICULATION
- C WATER CONDUITS
- RETAINING WALL
- TABLE DRAIN
- SWD EXISTING/FUTURE STORMWATER DRAINAGE
- E EXISTING/FUTURE ELECTRICAL RETICULATION
- S EXISTING/FUTURE SEWERAGE RETICULATION
- W EXISTING/FUTURE WATER RETICULATION
- C EXISTING/FUTURE WATER CONDUITS
- RM EXISTING SALTWATER EXCHANGE RISING MAIN
- EXISTING RETAINING WALL
- EXISTING TABLE DRAIN
- CONCRETE PATHWAY. REFER IPWEA STD DWG RS-065
- RAMPED PEDESTRIAN CROSSING. REFER IPWEA STD DWG No. RS-090
- MODIFIED INDUSTRIAL DRIVEWAY CROSSOVER TYPE 1. REFER PRSC STD DWG No. 8-20001
- "ZERO LOT" BOUNDARY
- "ATTACHED LOT" BOUNDARY
- INDICATIVE FUTURE DRIVEWAY LOCATIONS. REFER DWG No. B00231-CG206 TO B00231-CG207 FOR DETAILS.
- BIORETENTION FILTER AREA



**NOTE:** LOCATION & LEVELS OF ALL EXISTING SERVICES AND PROPOSED STORMWATER OUTLETS TO BE CONFIRMED ON SITE BY CONTRACTOR PRIOR TO THE COMMENCEMENT OF CONSTRUCTION. IT IS THE CONTRACTOR'S RESPONSIBILITY TO PERFORM A DIAL BEFORE YOU DIG SEARCH PRIOR TO COMMENCEMENT OF WORKS. ANY POTENTIAL CONFLICT OF EXISTING SERVICES OR STORMWATER OUTLETS SHALL BE REPORTED TO THE SUPERINTENDENT.



Plot Date: 16/12/2021 9:07:14 AM User: NICHOLAS PRINS File Name: C:\Users\NICHOLAS\Documents\B00231 - 454 CIVIL - DMS\A2 CURRENT\UP\A2B\B00231-B-SERV

										<b>Client</b> URBEX PTY LTD <b>Project</b> CAPESTONE STAGE 21B <b>Title</b> COMBINED SERVICES PLAN <b>SHEET 2 OF 2</b>	
										<b>Registered Engineer</b> <b>16/12/2021</b> <b>Date</b> <b>Register</b> <b>5694</b>	
0	FOR CONSTRUCTION ISSUE	NP	NP	DH	DH	16.12.2021					
A	ORIGINAL ISSUE	NP	NP	DH	DH	01.03.2021	<b>ENGINEERING CERTIFICATION</b>				
No.	Amendments	Drawn	Design	Design Chk	Appd	Date					
This drawing cannot be copied or reproduced in any form or used for any purpose other than that originally intended without the written permission of Empower Engineers and Project Managers ©COPYRIGHT 2019											

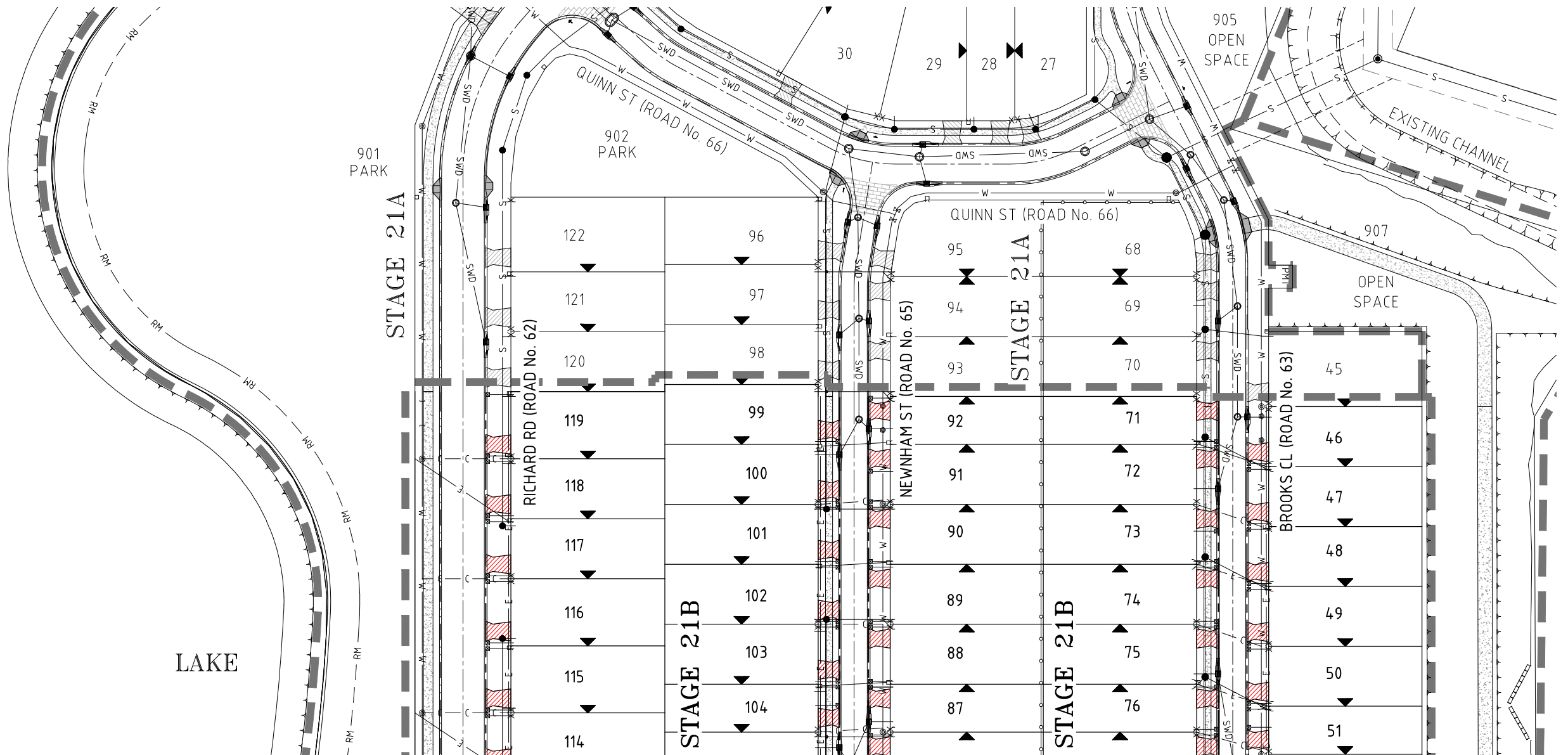
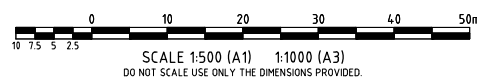
This drawing cannot be copied or reproduced in any form or used for any purpose other than that originally intended without the written permission of Empower Engineers and Project Managers ©COPYRIGHT 2019




	STAGE BOUNDARY
	"ZERO LOT" BOUNDARY
	"ATTACHED LOT" BOUNDARY
	INDICATIVE SINGLE DRIVEWAY FUTURE MANDATORY LOCATION
	LAYBACK KERB & CHANNEL
	UPRIGHT KERB & CHANNEL
	EDGE (FLUSH) KERB
	RETAINING WALL
	STORMWATER DRAINAGE
	WATER RETICULATION
	WATER CONDUITS
	ELECTRICAL RETICULATION
	SALT WATER EXCHANGE RISING MAIN
	SEWERAGE RETICULATION
	TABLE DRAIN
	KERB ADAPTER WITH 100mm DIA ROOFWATER CONNECTION
	2x KERB ADAPTERS WITH 100mm DIA ROOFWATER CONNECTIONS
	100mm DIA ROOFWATER CONNECTION DIRECTLY INTO CATCHPIT
	CONCRETE PATHWAY. REFER IPWEA STD DWG RS-065
	RAMPED PEDESTRIAN CROSSING. REFER IPWEA STD DWG No. RS-090
	MODIFIED INDUSTRIAL DRIVEWAY CROSSOVER TYPE 1. REFER PRSC STD DWG No. 8-20001



**NOTE:** LOCATION & LEVELS OF ALL EXISTING SERVICES AND PROPOSED STORMWATER OUTLETS TO BE CONFIRMED ON SITE BY CONTRACTOR PRIOR TO THE COMMENCEMENT OF CONSTRUCTION. IT IS THE CONTRACTOR'S RESPONSIBILITY TO PERFORM A DIAL BEFORE YOU DIG SEARCH PRIOR TO COMMENCEMENT OF WORKS. ANY POTENTIAL CONFLICT OF EXISTING SERVICES OR STORMWATER OUTLETS SHALL BE REPORTED TO THE SUPERINTENDENT.

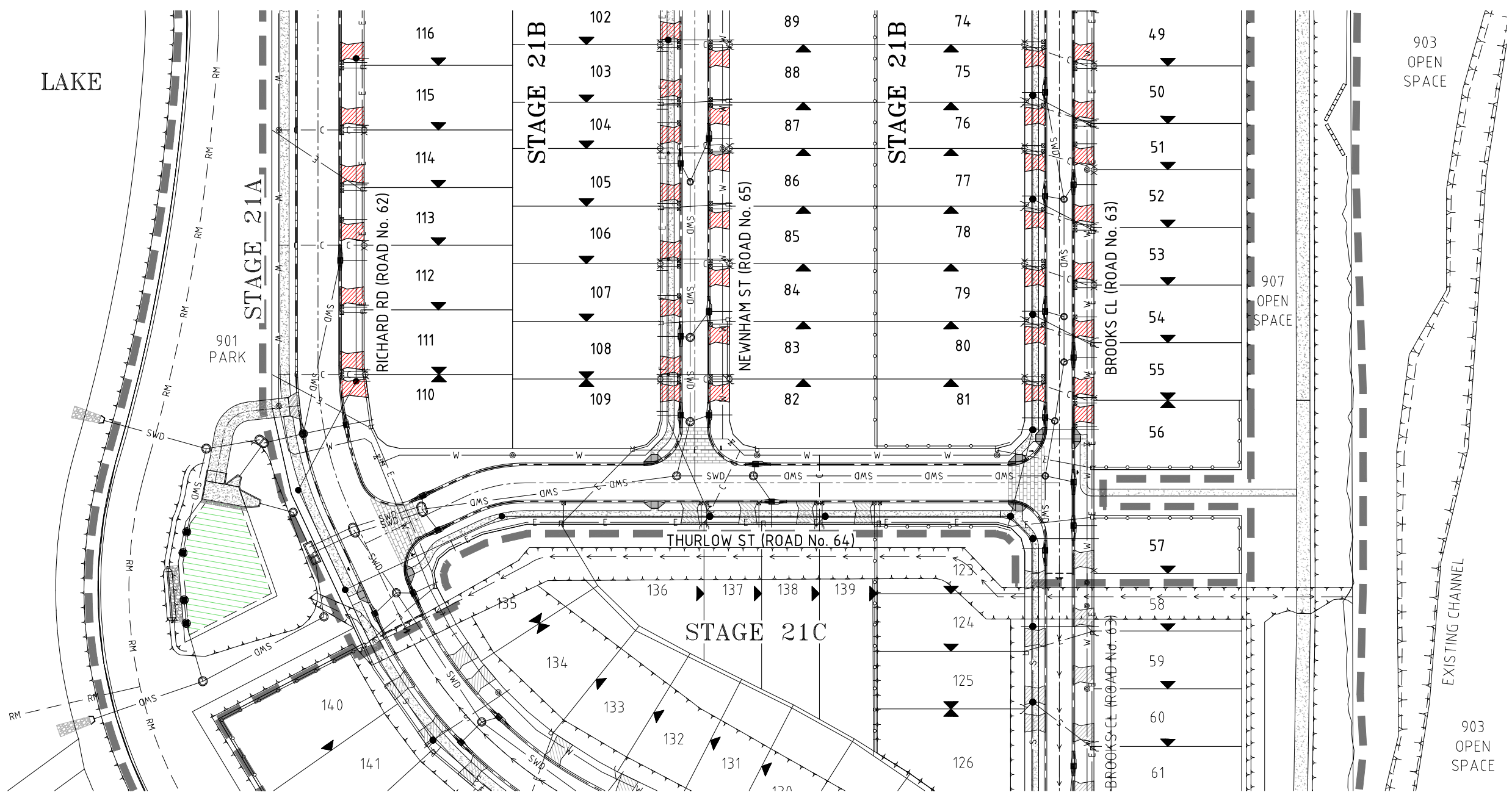
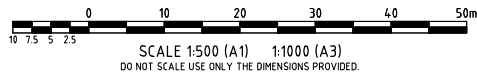
[illegible]

<i>Client</i>	<b>URBEX PTY LTD</b>	<i>Datum</i> <b>AHD</b>	<b>38847</b>	
<i>Project</i>	<b>CAPESTONE STAGE 21B</b>	<b>RL 10.649</b> <b>(MGA) COORD</b>		
<i>Title</i>	<b>DRIVEWAY ACCESS PLAN</b> <b>SHEET 1 OF 2</b>	<b>FOR CONSTRUCTION</b>		
		<i>Project No.</i> <b>B00231-CG206</b>	<i>Drawing No.</i> <b>0</b>	<i>Rev</i> <b>0</b>

- LEGEND**
- STAGE BOUNDARY
  - "ZERO LOT" BOUNDARY
  - "ATTACHED LOT" BOUNDARY
  - INDICATIVE SINGLE DRIVEWAY FUTURE MANDATORY LOCATION
  - LAYBACK KERB & CHANNEL
  - UPRIGHT KERB & CHANNEL
  - EDGE (FLUSH) KERB
  - RETAINING WALL
  - SWD STORMWATER DRAINAGE
  - W WATER RETICULATION
  - C C C WATER CONDUITS
  - E ELECTRICAL RETICULATION
  - RM SALTWATER EXCHANGE RISING MAIN
  - S SEWERAGE RETICULATION
  - TABLE DRAIN
  - KERB ADAPTER WITH 100mm DIA ROOFWATER CONNECTION
  - 2x KERB ADAPTERS WITH 100mm DIA ROOFWATER CONNECTIONS
  - 100mm DIA ROOFWATER CONNECTION DIRECTLY INTO CATCHPIT
  - CONCRETE PATHWAY. REFER IPWEA STD DWG RS-065
  - RAMPED PEDESTRIAN CROSSING. REFER IPWEA STD DWG No. RS-090
  - MODIFIED INDUSTRIAL DRIVEWAY CROSSOVER TYPE 1. REFER PRSC STD DWG No. 8-20001




**NOTE:** LOCATION & LEVELS OF ALL EXISTING SERVICES AND PROPOSED STORMWATER OUTLETS TO BE CONFIRMED ON SITE BY CONTRACTOR PRIOR TO THE COMMENCEMENT OF CONSTRUCTION. IT IS THE CONTRACTOR'S RESPONSIBILITY TO PERFORM A DIAL BEFORE YOU DIG SEARCH PRIOR TO COMMENCEMENT OF WORKS. ANY POTENTIAL CONFLICT OF EXISTING SERVICES OR STORMWATER OUTLETS SHALL BE REPORTED TO THE SUPERINTENDENT.



Plot Date: 16/12/2021 9:08:22 AM User: NICOLAS PRINS File Name: C:\Users\Nicolas\Documents\B00231\_4514\_Civil-DWG\LAZ\_CURRENT\UP\A2B\B00231-B-ACCESS

					Registered Engineer 16/12/2021 5694	
					Date	Register
0	FOR CONSTRUCTION ISSUE	NP	NP	DH	DH	16.12.2021
A	ORIGINAL ISSUE	NP	NP	DH	DH	01.03.2021
No.	Amendments	Drawn	Design	Design Chk	Appd	Date
ENGINEERING CERTIFICATION						
This drawing cannot be copied or reproduced in any form or used for any purpose other than that originally intended without the written permission of Empower Engineers and Project Managers ©COPYRIGHT 2019						



Client	URBEX PTY LTD	Datum AHD		
Project	CAPESTONE STAGE 21B	PSM 38847 RL 10.649 (MGA) COORD		
Title	DRIVEWAY ACCESS PLAN SHEET 2 OF 2	FOR CONSTRUCTION		
		Project No.	Drawing No.	Rev
		B00231-CG207		0