

**ENGINEER'S CERTIFICATION**  
 I, DARRYL HAYTER  
 being a Consulting Engineer and duly authorised representative of: -  
EMPOWER ENGINEERS AND PROJECT MANAGERS  
 hereby:-  
 # certify the information contained in this drawing is an accurate "as constructed" representation of the works;  
 # accept responsibility for the "as constructed" information contained in this drawing; and  
 # acknowledge the "as constructed" information contained in the drawing may be relied on by the MORETON BAY REGIONAL COUNCIL and others.  
 Certification for Stage 21A by D. Hayter on 31/03/21  
 For: EMPOWER ENGINEERS AND PROJECT MANAGERS RPEQ 5694

**REGISTERED SURVEYOR'S CERTIFICATION**  
 We, VERIS AUSTRALIA PTY LTD, hereby certify that the vertical and horizontal locations and dimensions shown on this plan are a true and correct record and were located by survey.  
Alistair Byrom  
 Delegate Cadastral Surveyor (sig.) Reg. Surveyor No. 6448 Date: 30/03/2021

DRAWING REVISIONS		REFERENCE DRAWINGS		DESIGN FILE No.	DESIGNED
REV.	REVISION DESCRIPTION	DRG. No.	DESCRIPTION	CONSTRUCT. No.	DATE
A	Progress Plot			SURVEY FILE No. 30105-21A000 AD	DRAWN JMc
B	Progress Plot			FIELD BOOK	DATE 11/09/2020
				LOG BOOK	CHECKED JMc
				LEVEL DATUM	DATE 11/09/2020
				DATUM	AHD PM177891

**veris**  
 BRISBANE 071 3861 4700 WHITSUNDAYS 071 4645 9000  
 MACKAY 071 4651 9100 CAIRNS 071 4022 9400  
 veris.com.au  
 ACN 615 750 727  
 Veris Australia Pty Ltd

**Moreton Bay**  
 Regional Council

SCALE 1:500 ORIGINAL SIZE A1

**MORETON BAY REGIONAL COUNCIL**  
 CABOOLTURE DISTRICT OFFICE  
 2 HASKING STREET CABOOLTURE QLD 4510  
 PO BOX 159 CABOOLTURE QLD 4510  
 Telephone: (07) 5453 0100  
 Fax: (07) 5453 4000

**STAGE 21A, CAPESTONE AS CONSTRUCTED DRAINAGE**

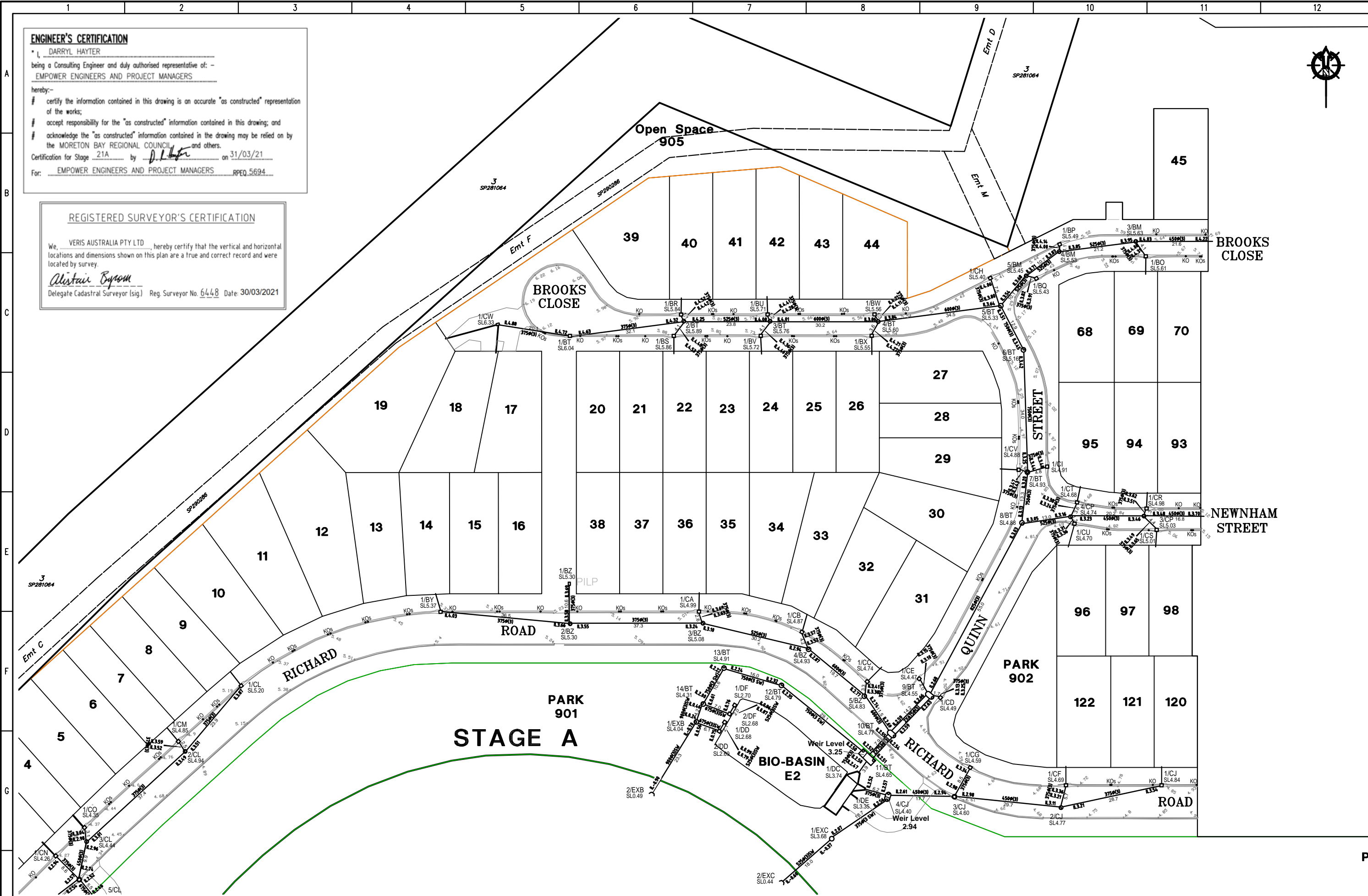
MBRC SUBDIVISION REFERENCE	
DA/39643/2019/V23R	
No. 1 OF 2 PLANS	
DRAWING NUMBER	REV.
430105-21A100 AD	1 B

**ENGINEER'S CERTIFICATION**

I, DARRYL HAYTER  
 being a Consulting Engineer and duly authorised representative of: -  
EMPOWER ENGINEERS AND PROJECT MANAGERS  
 hereby:-  
 # certify the information contained in this drawing is an accurate "as constructed" representation of the works;  
 # accept responsibility for the "as constructed" information contained in this drawing; and  
 # acknowledge the "as constructed" information contained in the drawing may be relied on by the MORETON BAY REGIONAL COUNCIL and others.  
 Certification for Stage 21A by D. Hayter on 31/03/21  
 For: EMPOWER ENGINEERS AND PROJECT MANAGERS RPEQ 5694

**REGISTERED SURVEYOR'S CERTIFICATION**

We, VERIS AUSTRALIA PTY LTD, hereby certify that the vertical and horizontal locations and dimensions shown on this plan are a true and correct record and were located by survey.  
Alastair Byrom  
 Delegate Cadastral Surveyor (sig.) Reg. Surveyor No. 6448 Date: 30/03/2021



DRAWING REVISIONS		REFERENCE DRAWINGS		DESIGN FILE No.	DESIGNED
REV.	REVISION DESCRIPTION	DRG. No.	DESCRIPTION	CONSTRUCT. No.	DATE
A	Progress Plot			30105-21A000 AD	11/09/2020
				FIELD BOOK	CHECKED JMc
				LOG BOOK	DATE 11/09/2020
				LEVEL DATUM	AHD
				DATUM	PM177891



BRISBANE PROSPECTION  
 MACKAY CAIRNS  
 veris.com.au  
 ACN 604 871 374  
 Queensland Surveying Professionals & Veris Company



**MORETON BAY REGIONAL COUNCIL**  
 CABOULTURE DISTRICT OFFICE  
 2 HASKING STREET CABOULTURE QLD 4510  
 PO BOX 150 CABOULTURE QLD 4510  
 Telephone: (07) 5433 0100  
 Fax: (07) 5433 4000

SCALE 1:500 ORIGINAL SIZE A1

**STAGE 21A, CAPESTONE AS CONSTRUCTED DRAINAGE**

MBRC SUBDIVISION REFERENCE	
DA/39643/2019/V23R	
No. 2 OF 2 PLANS	
DRAWING NUMBER	REV.
430105-21A100 ADO	A