

ENGINEER'S CERTIFICATION
 I, DARRYL HAYTER
 being a Consulting Engineer and duly authorised representative of: -
 EMPOWER ENGINEERS AND PROJECT MANAGERS
 hereby:-
 # certify the information contained in this drawing is an accurate "as constructed" representation of the works;
 # accept responsibility for the "as constructed" information contained in this drawing; and
 # acknowledge the "as constructed" information contained in the drawing may be relied on by the MORETON BAY REGIONAL COUNCIL and others.
 Certification for Stage 21A by *[Signature]* on 31/03/21
 For: EMPOWER ENGINEERS AND PROJECT MANAGERS RPEQ 5694

REGISTERED SURVEYOR'S CERTIFICATION
 We, VERIS AUSTRALIA PTY LTD, hereby certify that the vertical and horizontal locations and dimensions shown on this plan are a true and correct record and were located by survey.
Alistair Byrom
 Delegate Cadastral Surveyor (sig) Reg. Surveyor No. 6448 Date: 30/03/2021

LEGEND

| | |
|---|---|
| 6 | AS CONSTRUCTED CONTOURS (Interval 0.25m) |
| — | RETAINING WALL |

| DRAWING REVISIONS | | REFERENCE DRAWINGS | | DESIGN FILE No. | DESIGNED |
|-------------------|----------------------|--------------------|-------------|---------------------------------|-----------------|
| REV. | REVISION DESCRIPTION | DRG. No. | DESCRIPTION | CONSTRUCT. No. | DATE |
| A | Progress Plot | | | SURVEY FILE No. 30105-21A100 AE | DRAWN JMc |
| | | | | FIELD BOOK | DATE 24/02/2021 |
| | | | | LOG BOOK | CHECKED JMc |
| | | | | LEVEL DATUM | DATE 24/02/2021 |
| | | | | DATUM | AHD PM177891 |

veris
 BRISBANE 07 3861 4700 WHITSUNDAYS 07 4645 8000
 MACKAY 07 4657 9100 CAIRNS 07 4252 9400
 veris.com.au
 ACN 615 750 727
 Veris Australia Pty Ltd

SCALE 1:500 ORIGINAL SIZE A1

Moreton Bay
 Regional Council

MORETON BAY REGIONAL COUNCIL
 CABOOLTURE DISTRICT OFFICE
 2 HASKING STREET CABOOLTURE QLD 4510
 PO BOX 159 CABOOLTURE QLD 4510
 Telephone: (07) 5453 0100
 Fax: (07) 5453 4000

STAGE 21A, CAPESTONE
AS CONSTRUCTED
EARTHWORKS

MBRC SUBDIVISION REFERENCE

| | |
|--------------------|------|
| DA/39643/2019/V23R | |
| No. 1 OF 2 PLANS | |
| DRAWING NUMBER | REV. |
| 430105-21A100 AE01 | A |

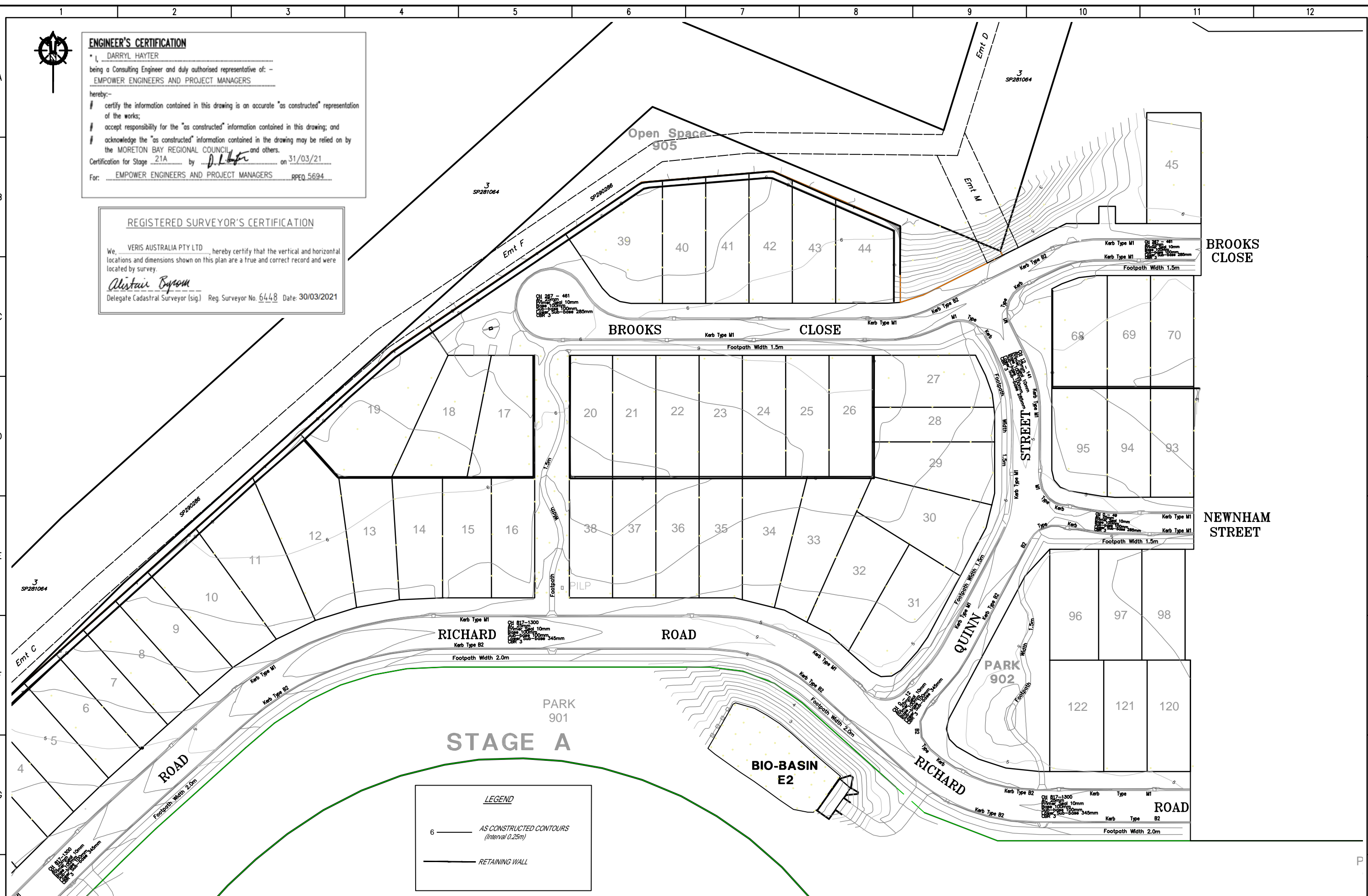


ENGINEER'S CERTIFICATION

I, DARRYL HAYTER
being a Consulting Engineer and duly authorised representative of: -
EMPOWER ENGINEERS AND PROJECT MANAGERS
hereby:-
certify the information contained in this drawing is an accurate "as constructed" representation of the works;
accept responsibility for the "as constructed" information contained in this drawing; and
acknowledge the "as constructed" information contained in the drawing may be relied on by the MORETON BAY REGIONAL COUNCIL and others.
Certification for Stage 21A by D.H. on 31/03/21
For: EMPOWER ENGINEERS AND PROJECT MANAGERS RPEQ 5694.

REGISTERED SURVEYOR'S CERTIFICATION

We, VERIS AUSTRALIA PTY LTD, hereby certify that the vertical and horizontal locations and dimensions shown on this plan are a true and correct record and were located by survey.
Alistair Byrom
Delegate Cadastral Surveyor (sig.) Reg. Surveyor No. 6448 Date: 30/03/2021



LEGEND

6 — AS CONSTRUCTED CONTOURS (Interval 0.25m)

— RETAINING WALL

| DRAWING REVISIONS | | REFERENCE DRAWINGS | | DESIGN FILE No. | DESIGNED |
|-------------------|----------------------|--------------------|-------------|-----------------|---------------------|
| REV. | REVISION DESCRIPTION | DRG. No. | DESCRIPTION | CONSTRUCT. No. | DATE |
| A | Progress Plot | | | 30105-21A100 AE | JMc |
| | | | | FIELD BOOK | DATE 25/02/2021 |
| | | | | LOG BOOK | CHECKED JMc |
| | | | | LEVEL DATUM | AHD DATE 25/02/2021 |
| | | | | DATUM | PM177891 |



BRISBANE PROSERPINE
07 3866 4700 07 4548 1722
MACKAY CAIRNS
07 4951 2511 07 4511 8722
veris.com.au
ACN 604 871 374
Queensland Surveying Pty Ltd, a Veris Company



MORETON BAY REGIONAL COUNCIL
CABOOLTURE DISTRICT OFFICE
2 HASKING STREET CABOOLTURE QLD 4510
PO BOX 150 CABOOLTURE QLD 4510
Telephone: (07) 5433 0100
Fax: (07) 5433 4000

SCALE 1:500

ORIGINAL SIZE A1

**STAGE 21A, CAPESTONE
AS CONSTRUCTED
EARTHWORKS**

| | |
|----------------------------|------|
| MBRC SUBDIVISION REFERENCE | |
| DA/39643/2019/V23R | |
| No. 2 OF 2 PLANS | |
| DRAWING NUMBER | REV. |
| 430105-21A100 AEO | A |