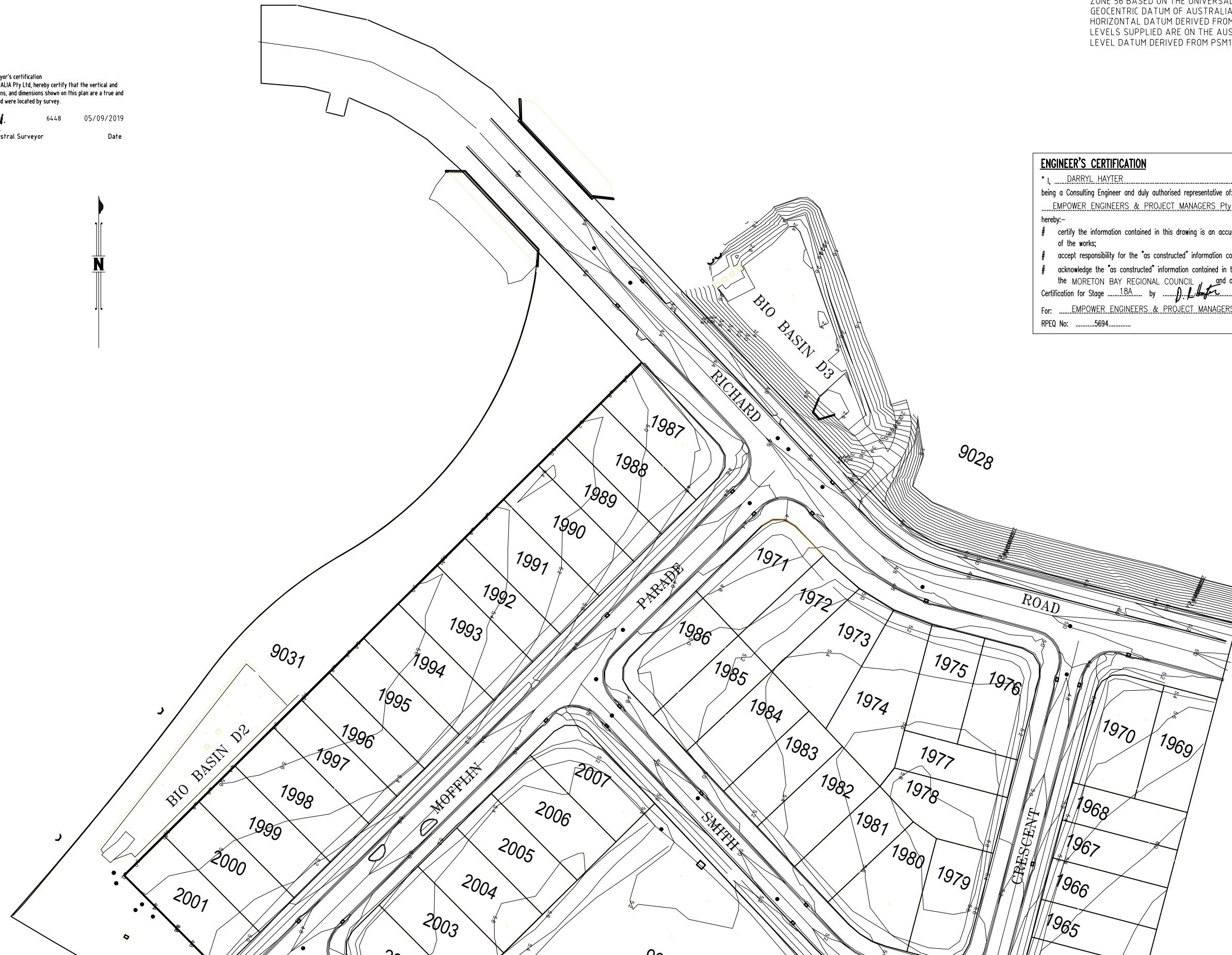


COORDINATE DATUM NOTE:
 HORIZONTAL COORDINATES(E,N) SUPPLIED ARE MAPPING GRID OF AUSTRALIA(MGA),
 ZONE 56 BASED ON THE UNIVERSAL TRANSVERSE MERCATOR PROJECTION AND THE
 GEOCENTRIC DATUM OF AUSTRALIA 1994.
 HORIZONTAL DATUM DERIVED FROM PSM160605, E 496434.400, N 7050402.659.
 LEVELS SUPPLIED ARE ON THE AUSTRALIAN HEIGHT DATUM(AHD)
 LEVEL DATUM DERIVED FROM PSM160605 RL 20.016 (AHD)

Registered Surveyor's certification
 We, VERIS AUSTRALIA Pty Ltd, hereby certify that the vertical and
 horizontal locations, and dimensions shown on this plan are a true and
 correct record and were located by survey.

[Signature] 6448 05/09/2019
 Delegate Cadastral Surveyor Date



ENGINEER'S CERTIFICATION
 I, DARRYL HAYTER
 being a Consulting Engineer and duly authorised representative of: -
EMPOWER ENGINEERS & PROJECT MANAGERS Pty Ltd
 hereby:-
 # certify the information contained in this drawing is an accurate "as constructed" representation
 of the works;
 # accept responsibility for the "as constructed" information contained in this drawing; and
 # acknowledge the "as constructed" information contained in the drawing may be relied on by
 the MORETON BAY REGIONAL COUNCIL and others.
 Certification for Stage 18A by [Signature] on 5/11/19
 For: EMPOWER ENGINEERS & PROJECT MANAGERS Pty Ltd
 RPEQ No: 5694

LEGEND

6.2	AS CONSTRUCTED CONTOURS (Interval 0.2m)
—	RETAINING WALL

A1

INDEX	DATE	REVISIONS	DRAWN	CHECKED	PASSED	INITIALS	DATE
A	05/09/2019	ORIGINAL	JMc	JMc			

DRAWN	JMc	05/09/2019
CHECKED	JMc	05/09/2019
PASSED		

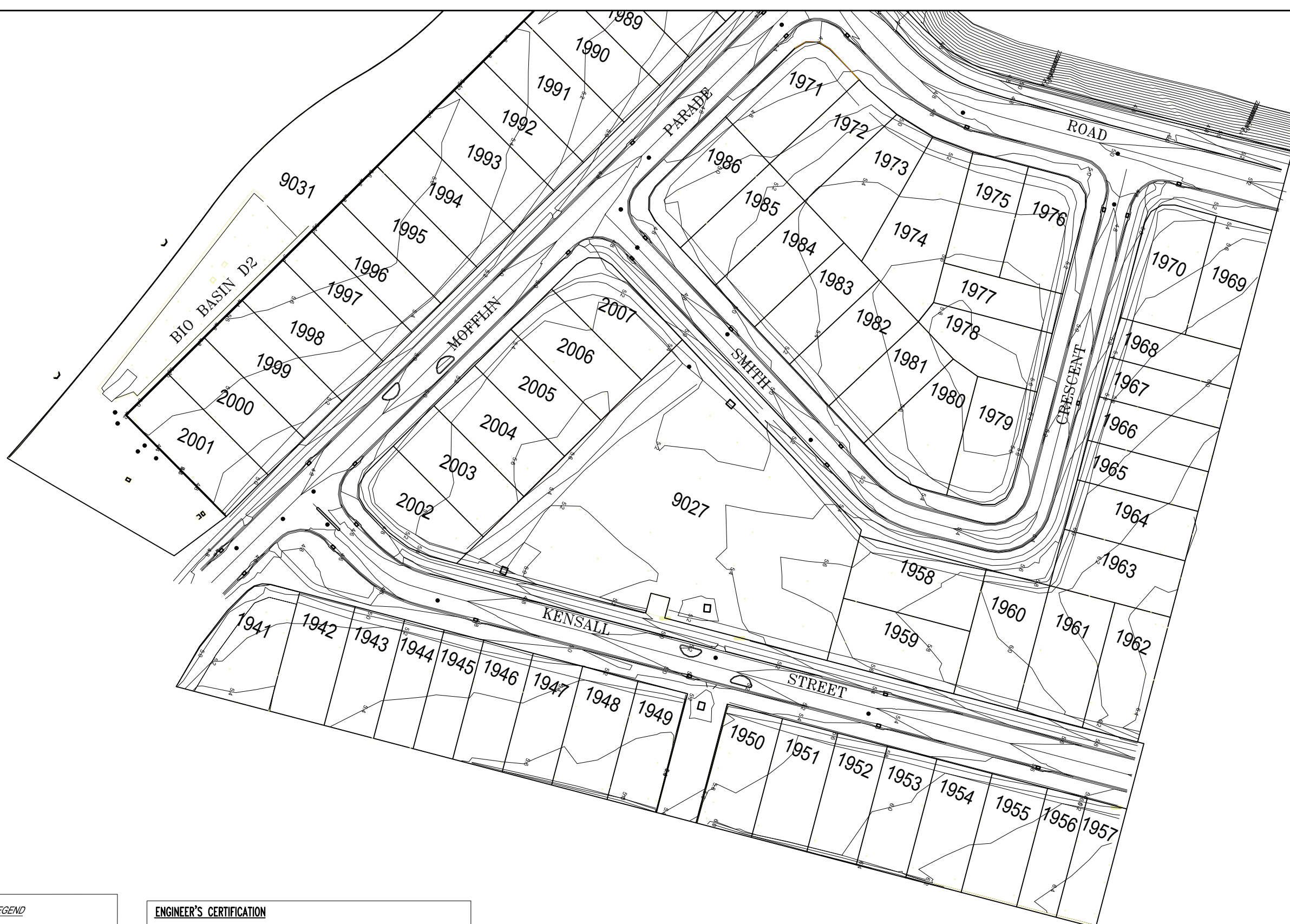
BRISBANE WHITSUNDAYS
 (07) 3666 4700 (07) 4644 1722
 MACKAY CAIRNS
 (07) 4651 2011 (07) 4651 0722
 veris.com.au
 A/CN 615 738 727
 Veris Australia Pty Ltd



MORETON BAY REGIONAL COUNCIL
 CABOOLTURE DISTRICT OFFICE
 2 HASKING STREET CABOOLTURE QLD 4510
 PO BOX 159 CABOOLTURE QLD 4510
 Telephone: (07) 5433 0100
 Fax: (07) 5433 4000

DA/36647/2018/V23R
 STAGE 18A
 CAPESTONE ESTATE
 AS CONSTRUCTED
 EARTHWORKS

SHEET 1 OF 2 SHEETS	SCALE 1:500
REVISION DATE 05/09/2019	REVISION A
DISCIPLINE CODE	
DRAWING NO.	
30105-18A100 AE01 (A)	



LEGEND

6.2 ——— AS CONSTRUCTED CONTOURS
(Interval 0.2m)

————— RETAINING WALL

ENGINEER'S CERTIFICATION

I, DARRYL HAYTER
being a Consulting Engineer and duly authorised representative of: -
EMPOWER ENGINEERS & PROJECT MANAGERS Pty Ltd
hereby:-
certify the information contained in this drawing is an accurate "as constructed" representation of the works;
accept responsibility for the "as constructed" information contained in this drawing; and
acknowledge the "as constructed" information contained in the drawing may be relied on by the MORETON BAY REGIONAL COUNCIL and others.
Certification for Stage 18A by D. Hayter on 5/11/19
For: EMPOWER ENGINEERS & PROJECT MANAGERS Pty Ltd
RPEQ No: 5694

COORDINATE DATUM NOTE:
HORIZONTAL COORDINATES(E,N) SUPPLIED ARE MAPPING GRID OF AUSTRALIA(MGA), ZONE 56 BASED ON THE UNIVERSAL TRANSVERSE MERCATOR PROJECTION AND THE GEOCENTRIC DATUM OF AUSTRALIA 1994.
HORIZONTAL DATUM DERIVED FROM PSM160605, E 496434.400, N 7050402.659.
LEVELS SUPPLIED ARE ON THE AUSTRALIAN HEIGHT DATUM(AHD)
LEVEL DATUM DERIVED FROM PSM160605 RL 20.016 (AHD)

Registered Surveyor's certification
We, VERIS AUSTRALIA Pty Ltd, hereby certify that the vertical and horizontal locations, and dimensions shown on this plan are a true and correct record and were located by survey.
D. Hayter 6448 05/09/2019
Delegate Cadastral Surveyor Date



PSM160605
E: 496434.400
N: 7050402.659
RL: 20.016m

A1

INDEX	DATE	ORIGINAL	REVISIONS	DRAWN	CHECKED	PASSED	INITIALS	DATE
A	05/09/2019	ORIGINAL		JMc	JMc			

BRISBANE (07) 3866 4700	WHITSUNDAYS (07) 4844 1722
MACKAY (07) 4851 2811	CAIRNS (07) 4851 8722
veris.com.au	
ACN 615 738 727	
Veris Australia Pty Ltd	



MORETON BAY REGIONAL COUNCIL
CABOOLTURE DISTRICT OFFICE
2 HASKING STREET CABOOLTURE QLD 4510
PO BOX 159 CABOOLTURE QLD 4510
Telephone: (07) 5433 0100
Fax: (07) 5433 4000

DA/36647/2018/V23R
STAGE 18A
CAPESTONE ESTATE
AS CONSTRUCTED
EARTHWORKS

SHEET 2 OF 2 SHEETS	SCALE 1:500
REVISION DATE 05/09/2019	REVISION A
DISCIPLINE CODE	
DRAWING NO.	
30105-18A100 AE01 (A)	