



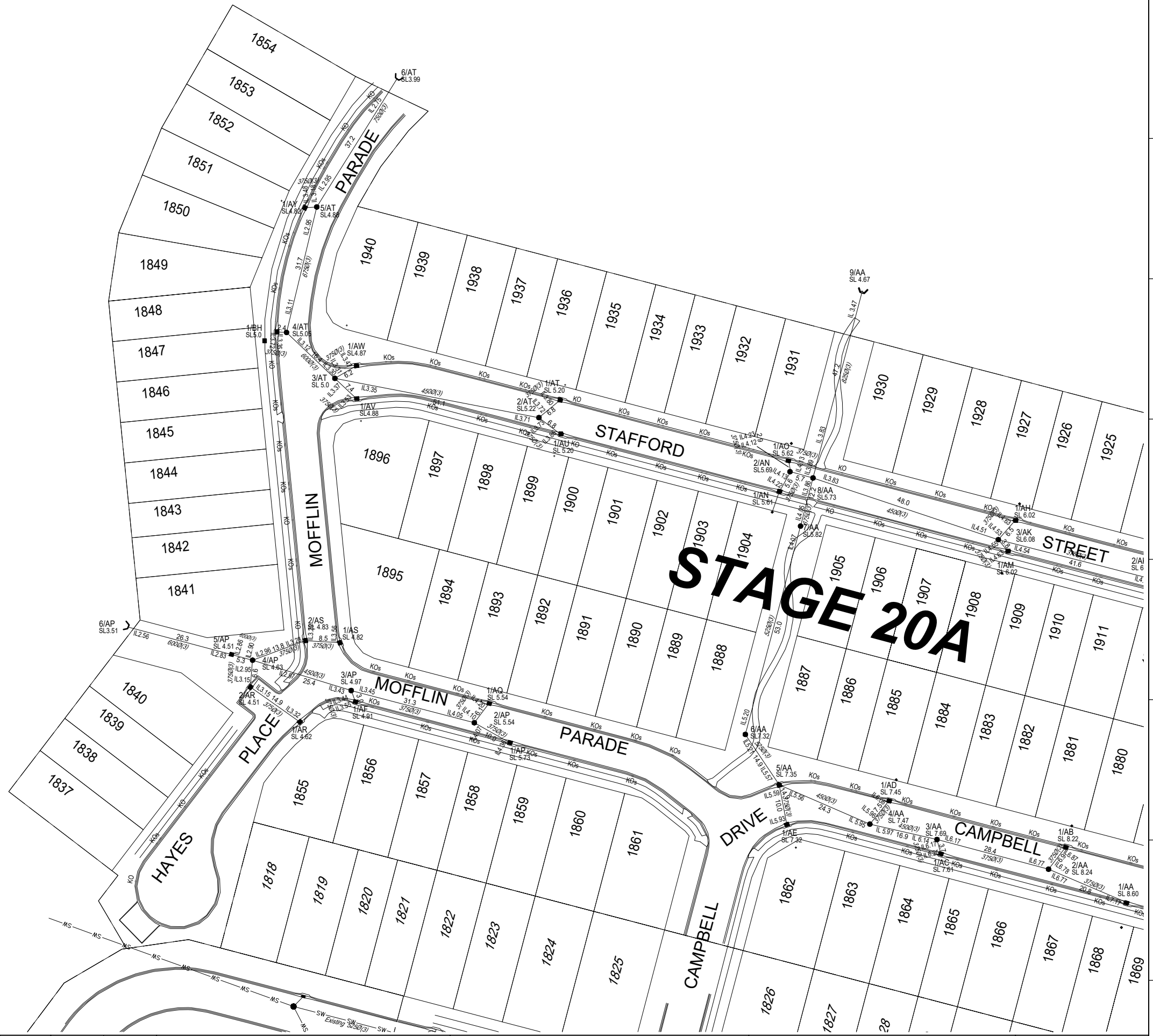
**ENGINEER'S CERTIFICATION**

I, **DARRYL HAYTER**  
 being a Consulting Engineer and duly authorised representative of: -  
 Empower Engineers & Project Managers  
 hereby:-  
 # certify the information contained in this drawing is an accurate "as constructed" representation of the works;  
 # accept responsibility for the "as constructed" information contained in this drawing; and  
 # acknowledge the "as constructed" information contained in the drawing may be relied on by the Moreton Bay Regional Council and others.  
 Certification for Stage 20A by *D. Hayter* on 28/06/18  
 For: Empower Engineers & Project Managers ppp 5694

**Registered Surveyor's Certification.**

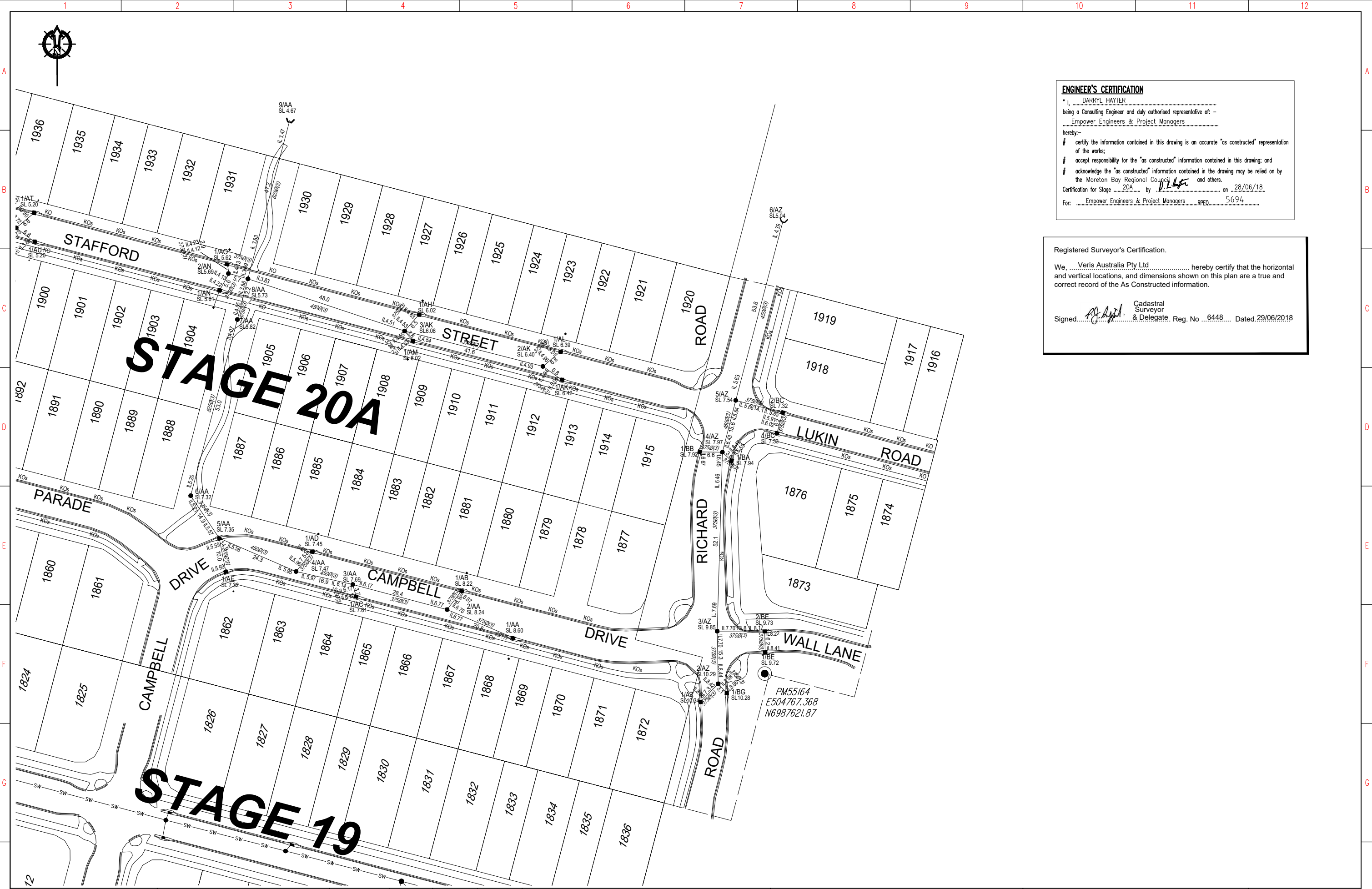
We, **Veris Australia Pty Ltd** hereby certify that the horizontal and vertical locations, and dimensions shown on this plan are a true and correct record of the As Constructed information.

Cadastral Surveyor  
 Signed: *P. A. J. A.* & Delegate, Reg. No. 6448 Dated 29/06/2018



**STAGE 20A**

<b>DRAWING REVISIONS</b>		<b>REFERENCE DRAWINGS</b>		DESIGN FILE No.	DESIGNED	 BRISBANE (07) 3668 4700 MACKAY (07) 4651 2911 PROSERPINE (07) 4645 1752 CAIRNS (07) 4031 8722 veris.com.au ACN 404 671 374 Queensland Surveying Pty Ltd, a Veris Company	 <b>MORETON BAY REGIONAL COUNCIL</b> CABOOLTURE DISTRICT OFFICE 2 HASKING STREET CABOOLTURE QLD 4510 Telephone: (07) 5433 0100 Fax: (07) 5433 4000	<b>STAGE 20A, CAPESTONE AS CONSTRUCTED DRAINAGE</b>		<b>MBRC SUBDIVISION REFERENCE</b>	
REV.	REVISION DESCRIPTION	DRG. No.	DESCRIPTION	CONSTRUCT. No.	DATE			DA/33911/2017/V23R	No. 1 OF 2 PLANS		
A	Progress Plot			30105-20A100 AD	21/06/2018			DRAWING NUMBER		REV.	
				FIELD BOOK	21/06/2018			30105-20A100 AD		A	
				LOG BOOK							
				LEVEL DATUM	AHD						
				DATUM	PM177891						
				SCALE 1:500	ORIGINAL SIZE A1						



**ENGINEER'S CERTIFICATION**  
 I, DARRYL HAYTER  
 being a Consulting Engineer and duly authorised representative of: -  
 Empower Engineers & Project Managers  
 hereby:-  
 # certify the information contained in this drawing is an accurate "as constructed" representation of the works;  
 # accept responsibility for the "as constructed" information contained in this drawing; and  
 # acknowledge the "as constructed" information contained in the drawing may be relied on by the Moreton Bay Regional Council and others.  
 Certification for Stage 20A by D.L.H. on 28/06/18  
 For: Empower Engineers & Project Managers RPEQ 5694

**Registered Surveyor's Certification.**  
 We, Veris Australia Pty Ltd hereby certify that the horizontal and vertical locations, and dimensions shown on this plan are a true and correct record of the As Constructed information.  
 Signed: [Signature] Cadastral Surveyor & Delegate. Reg. No 6448 Dated 29/06/2018

DRAWING REVISIONS		REFERENCE DRAWINGS		DESIGN FILE No.	DESIGNED
REV.	REVISION DESCRIPTION	DRG. No.	DESCRIPTION	CONSTRUCT. No.	DATE
A	Progress Plot			30105-20A100 AD	21/06/2018
				FIELD BOOK	CHECKED JMc
				LOG BOOK	DATE 21/06/2018
				LEVEL DATUM	DATE 21/06/2018
				DATUM	AHD PM177891

**veris**  
 BRISBANE 07 3888 4700  
 MACKAY 07 4651 2911  
 PROSERPINE 07 4651 1772  
 CAIRNS 07 4651 6722  
 veris.com.au  
 ACN 604 671 374  
 Queensland Surveying Pty Ltd, a Veris Company

SCALE 1:500 ORIGINAL SIZE A1

**Moreton Bay**  
 Regional Council

**MORETON BAY REGIONAL COUNCIL**  
 CABOOLTURE DISTRICT OFFICE  
 2 HASKING STREET CABOOLTURE QLD 4510  
 PO BOX 159 CABOOLTURE QLD 4510  
 Telephone: (07) 5433 0100  
 Fax: (07) 5433 4000

**STAGE 20A, CAPESTONE AS CONSTRUCTED DRAINAGE**

MBRC SUBDIVISION REFERENCE	
DA/33911/2017/V23R	
No. 2 OF 2 PLANS	
DRAWING NUMBER	REV.
30105-20A100 AD	A