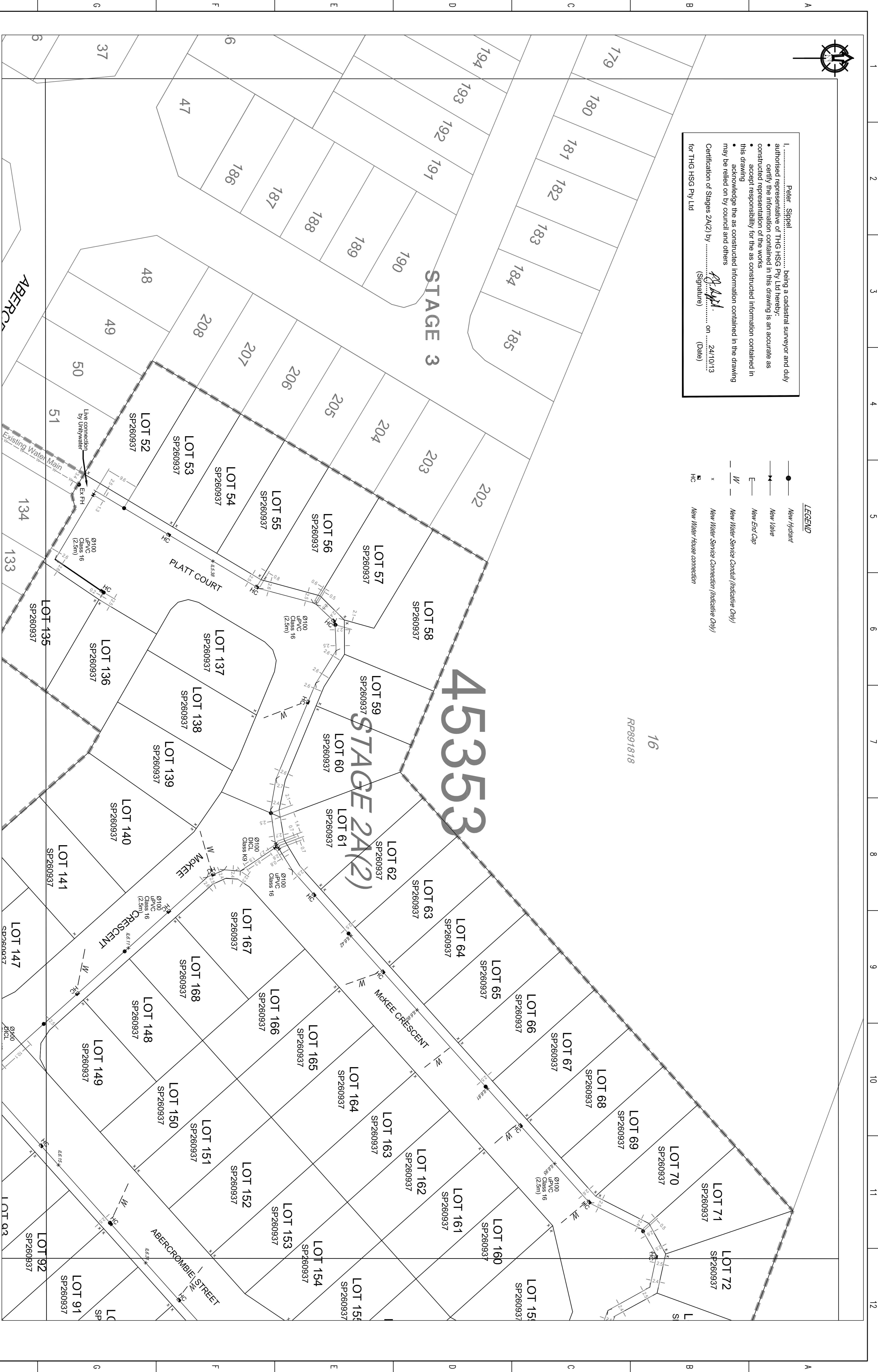


I, Peter Sippel being a cadastral surveyor and duly authorised representative of THG HSG Pty Ltd hereby:
 • certify the information contained in this drawing is an accurate as constructed representation of the works
 • accept responsibility for the as constructed information contained in this drawing
 • acknowledge the as constructed information contained in the drawing may be relied on by council and others
 Certification of Stages 2A(2) by Peter Sippel on 24/10/13
 (Signature) (Date)
 for THG HSG Pty Ltd

LEGEND

- New Hydrant
- New Lane
- New End Cap
- New Water Service Conduit (Indicative Only)
- x New Water Service Connection (Indicative Only)
- HC New Water House connection



DRAWING REVISIONS		REFERENCE DRAWINGS		DESIGNED		THIS WORK WAS PREPARED BY:		MARC SUBMISSION REFERENCE	
REV.	REVISION DESCRIPTION	DRG. No.	DESCRIPTION	CONSTRUCT. No.	DATE	DATE	THG HSG PTY LTD	No. 1 OF 3 PLANS	2007/11561/NEC/EC/1
A	Original				24/10/13	EM	THG HSG PTY LTD		
B	Update				24/10/13	EM			

REV.	DESCRIPTION	DATE	DATE
	LOG BOOK	24/10/13	EM
	LEVEL DATUM	24/10/13	EM
	DATUM	PM38947	

SCALE	ORIGINAL SIZE
1:500	A1

STAGE 2A(2) CAPESTONE AS CONSTRUCTED WATER RETICULATION	45353
Moreton Bay Regional Council CABOULTURE DISTRICT OFFICE 2 HASTING STREET CABOULTURE QLD 4510 Telephone: (07) 5433 0100 Fax: (07) 5433 4000	