

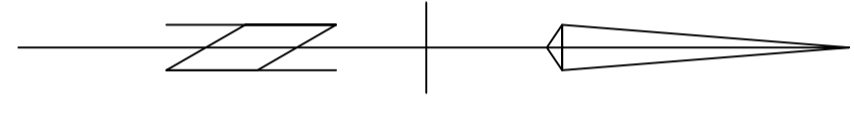
1 2 3 4 5 6 7 8 9 10 11 12

ENGINEER'S CERTIFICATION

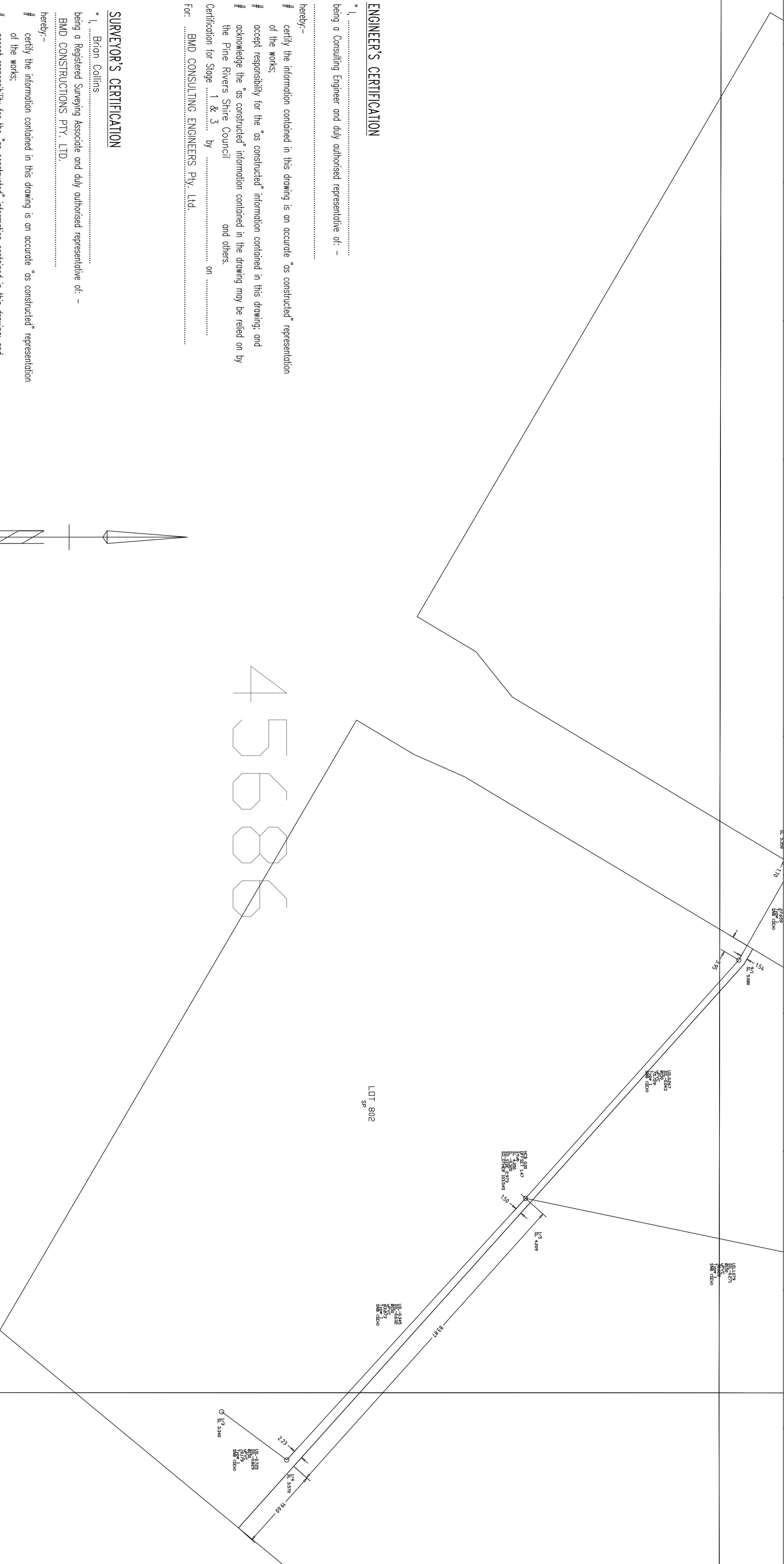
"I, being a Consulting Engineer and duly authorised representative of: -
 hereby:-
 # certify the information contained in this drawing is an accurate "as constructed" representation of the works;
 # accept responsibility for the "as constructed" information contained in this drawing, and
 # acknowledge the "as constructed" information contained in the drawing may be relied on by the Pine Rivers Shire Council
 and others.
 Certification for Stage 1 & 3 by on
 For: BMD CONSULTING ENGINEERS Pty. Ltd.


SURVEYOR'S CERTIFICATION

"I, Brian Collins being a Registered Surveying Associate and duly authorised representative of: -
 BMD CONSTRUCTIONS PTY. LTD.
 hereby:-
 # certify the information contained in this drawing is an accurate "as constructed" representation of the works;
 # accept responsibility for the "as constructed" information contained in this drawing, and
 # acknowledge the "as constructed" information contained in the drawing may be relied on by the Pine Rivers Shire Council
 and others.
 Certification for Stage 1 & 3 by on May 2012.
 For: Brian Collins, Eng.Surv.



456886



DRAWING REVISIONS		REFERENCE DRAWINGS		DESIGNED		THIS WORK WAS PREPARED BY: SUNSTATE ENGINEERING SURVEYS UNIT 2/44 Stone St. Constat. Qld. 4019 Telephone: (07) 3288 7813 Fax: (07) 3288 7883	ORIGINAL SIZE A1	 MORETON BAY REGIONAL COUNCIL CAROLINE STREET OFFICE 2 HASKING STREET CAROLINE QLD 4510 Telephone: (07) 5433 0100 Fax: (07) 5433 4000	AS CONSTRUCTED SEWER CAPESTONE STAGES 1 & 3	CSC SUBMISSION REFERENCE	
REV.	DESCRIPTION	DRG. No.	DESCRIPTION	CONSTRUCT. No.	DATE					No. OF PLANS	REV.
A	PRELIMINARY AS CONSTRUCTED								DA 2055/10548	5	A
1									45519		