



I, Peter Sippel being a cadastral surveyor and duly authorised representative of THG WSG Pty Ltd hereby:

- certify the information contained in this drawing is an accurate as constructed representation of the works
- accept responsibility for the as constructed information contained in this drawing
- acknowledge the as constructed information contained in the drawing may be relied on by council and others

Certification of Stage 5 by [Signature] on 12/1/15
(Signature) (Date)

for THG WSG Pty Ltd

LEGEND

- New Hydrant
- New Valve
- New End Cap
- New Water Service Conduit (Indicative Only)
- New Water Service point of entry (Indicative Only)
- New Water House connection (Indicative Only)



ENGINEER'S CERTIFICATION

* I, David Polden being a Consulting Engineer and duly authorised representative of: - BMD Consulting hereby:

- certify the information contained in this drawing is an accurate "as constructed" representation of the works;
- accept responsibility for the "as constructed" information contained in this drawing; and
- acknowledge the "as constructed" information contained in the drawing may be relied on by the Moreton Bay Regional Council and others.

Certification for Stage 5 by [Signature] on 13.02.15
For: BMD CONSULTING Pty. Ltd. RPEQ 1907

DRAWING REVISIONS		REFERENCE DRAWINGS		DESIGN FILE No.	DESIGNED
REV.	REVISION DESCRIPTION	DRG. No.	DESCRIPTION	CONSTRUCT. No.	DATE
A	Original			SURVEY FILE No. 247405_9 AW	DRAWN EJM
				FIELD BOOK	DATE 12/1/15
				LOG BOOK	CHECKED EJM
				LEVEL DATUM AHD	DATE 12/1/15
				DATUM PM137449	

THIS WORK WAS PREPARED BY:
THG WSG PTY LTD

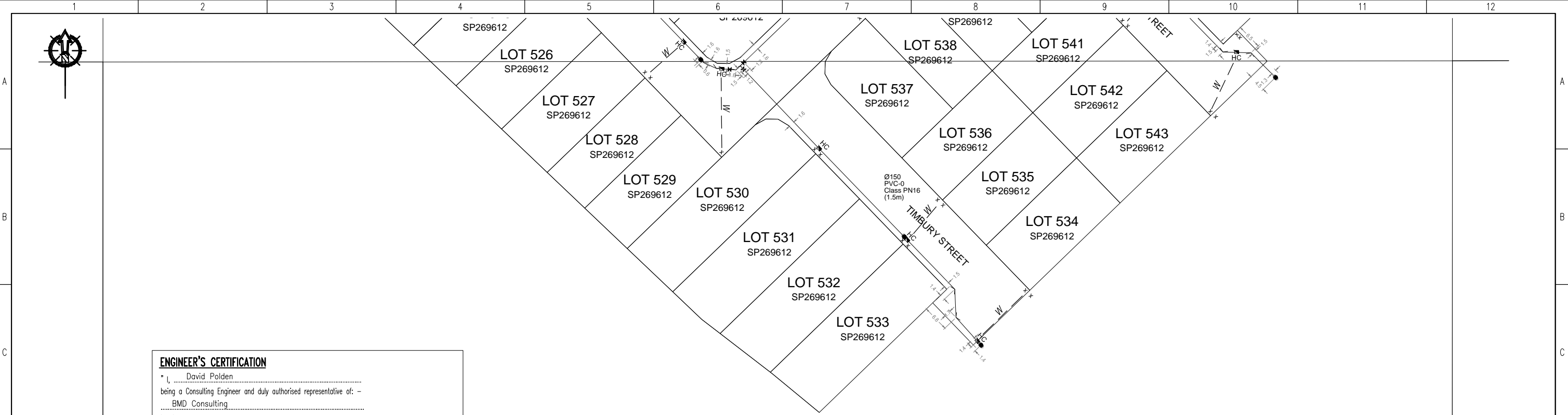
SCALE 1:500 ORIGINAL SIZE A1



MORETON BAY REGIONAL COUNCIL
CABOOLTURE DISTRICT OFFICE
2 HASKING STREET CABOOLTURE QLD 4510
PO BOX 159 CABOOLTURE QLD 4510
Telephone: (07) 5433 0100
Fax: (07) 5433 4000

STAGE 5, CAPESTONE
AS CONSTRUCTED
WATER RETICULATION

MBRC SUBDIVISION REFERENCE	
DA/28463/2013/V23R	
No. 1 OF 2 PLANS	REV.
ASCON GRID NUMBER	
46188	A



ENGINEER'S CERTIFICATION
 I, David Polden
 being a Consulting Engineer and duly authorised representative of: -
 BMD Consulting
 hereby:-
 # certify the information contained in this drawing is an accurate "as constructed" representation of the works;
 # accept responsibility for the "as constructed" information contained in this drawing; and
 # acknowledge the "as constructed" information contained in the drawing may be relied on by the Moreton Bay Regional Council and others.
 Certification for Stage 5 by [Signature] on 13.02.15
 For: BMD CONSULTING Pty. Ltd. RPEQ 1907

I, Peter Sippel being a cadastral surveyor and duly authorised representative of THG WSG Pty Ltd hereby:
 • certify the information contained in this drawing is an accurate as constructed representation of the works
 • accept responsibility for the as constructed information contained in this drawing
 • acknowledge the as constructed information contained in the drawing may be relied on by council and others
 Certification of Stage 5 by [Signature] on 12/1/15
 for THG WSG Pty Ltd (Signature) (Date)

- LEGEND**
- New Hydrant
 - ✕ New Valve
 - ⌊ New End Cap
 - W New Water Service Conduit (Indicative Only)
 - x New Water Service point of entry (Indicative Only)
 - HC New Water House connection (Indicative Only)

DRAWING REVISIONS		REFERENCE DRAWINGS		DESIGN FILE No.	DESIGNED	THIS WORK WAS PREPARED BY: THG WSG PTY LTD		MORETON BAY REGIONAL COUNCIL CABOOLTURE DISTRICT OFFICE 2 HASKING STREET CABOOLTURE QLD 4510 PO BOX 159 CABOOLTURE QLD 4510 Telephone: (07) 5433 0100 Fax: (07) 5433 4000	MBRC SUBDIVISION REFERENCE		
REV.	REVISION DESCRIPTION	DRG. No.	DESCRIPTION	CONSTRUCT. No.	DATE				DA/28463/2013/V23R	No. 2 OF 2 PLANS	
A	Original			SURVEY FILE No. 247405_9 AW	12/1/15				ASCON GRID NUMBER	REV.	
				FIELD BOOK	12/1/15				46355	A	
				LOG BOOK							
				LEVEL DATUM AHD	12/1/15	SCALE 1:500					
				DATUM PM137449		ORIGINAL SIZE A1					