



I, Peter Sippel being a cadastral surveyor and duly authorised representative of THG WSG Pty Ltd hereby:

- certify the information contained in this drawing is an accurate as constructed representation of the works
- accept responsibility for the as constructed information contained in this drawing
- acknowledge the as constructed information contained in the drawing may be relied on by council and others

Certification of Stage 6

by [Signature] on 18/3/15
(Signature) (Date)

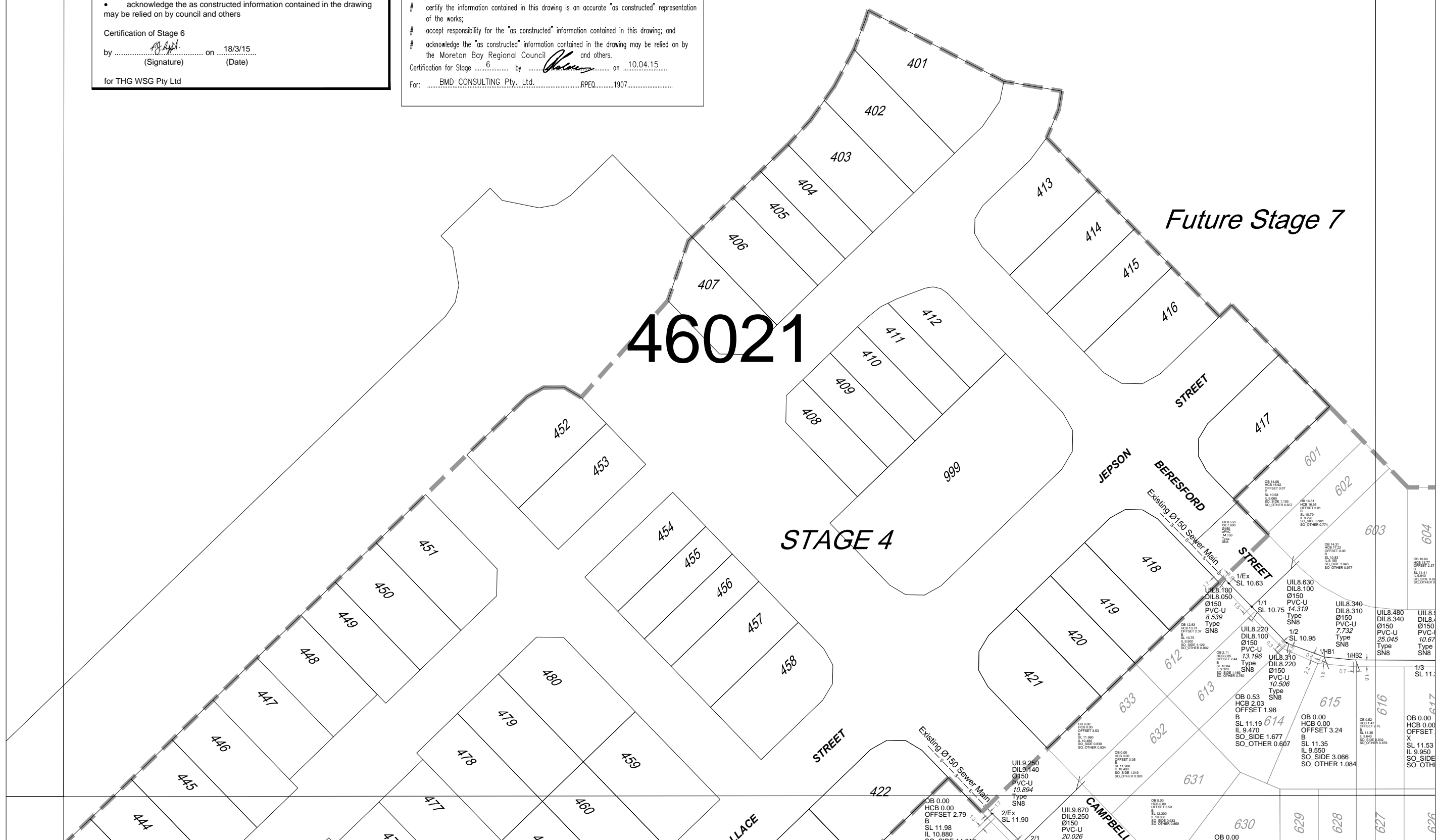
for THG WSG Pty Ltd

ENGINEER'S CERTIFICATION

"I, David Polden being a Consulting Engineer and duly authorised representative of: - BMD Consulting hereby:-

- certify the information contained in this drawing is an accurate "as constructed" representation of the works;
- accept responsibility for the "as constructed" information contained in this drawing; and
- acknowledge the "as constructed" information contained in the drawing may be relied on by the Moreton Bay Regional Council and others.

Certification for Stage 6 by [Signature] on 10.04.15
For: BMD CONSULTING Pty. Ltd. RPEQ.....1907.....



DRAWING REVISIONS		REFERENCE DRAWINGS		DESIGN FILE No.	DESIGNED
REV.	REVISION DESCRIPTION	DRG. No.	DESCRIPTION	CONSTRUCT. No.	DATE
A	Original			247406_6 AS	EJM
				FIELD BOOK	DATE 18/3/15
				LOG BOOK	CHECKED EJM
				LEVEL DATUM	DATE 18/3/15
				DATUM	PM177891

THIS WORK WAS PREPARED BY:
THG WSG PTY LTD

SCALE 1:500 ORIGINAL SIZE A1

MORETON BAY REGIONAL COUNCIL
CABOOLTURE DISTRICT OFFICE
2 HASKING STREET CABOOLTURE QLD 4510
PO BOX 159 CABOOLTURE QLD 4510
Telephone: (07) 5433 0100
Fax: (07) 5433 4000

STAGE 6, CAPESTONE AS CONSTRUCTED SEWER RETICULATION

MBRC SUBDIVISION REFERENCE	
DA/29021/2014/V23R	
No. 1 OF 4 PLANS	
ASCON GRID NUMBER	REV.
46021	A

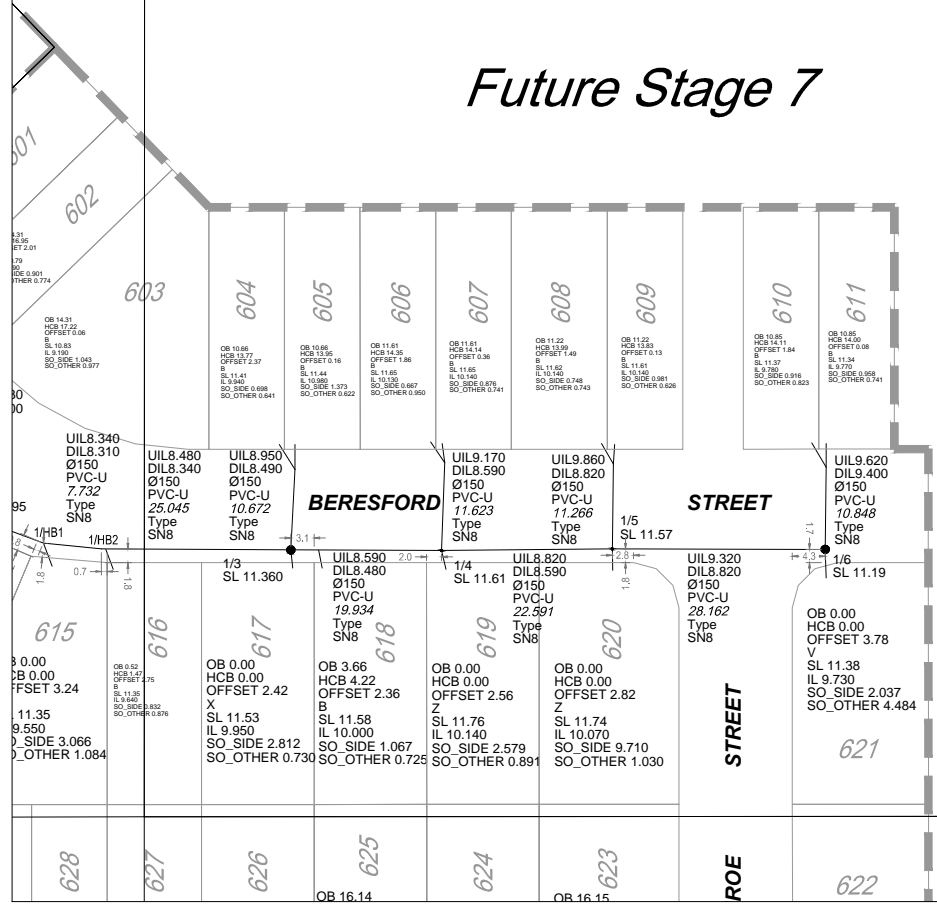


ENGINEER'S CERTIFICATION
 I, David Palden
 being a Consulting Engineer and duly authorised representative of: -
BMD Consulting
 hereby:-
 # certify the information contained in this drawing is an accurate "as constructed" representation of the works;
 # accept responsibility for the "as constructed" information contained in this drawing; and
 # acknowledge the "as constructed" information contained in the drawing may be relied on by the Moreton Bay Regional Council and others.
 Certification for Stage 6 by [Signature] on 10.04.15
 For: BMD CONSULTING Pty. Ltd. RPEQ. 1907.

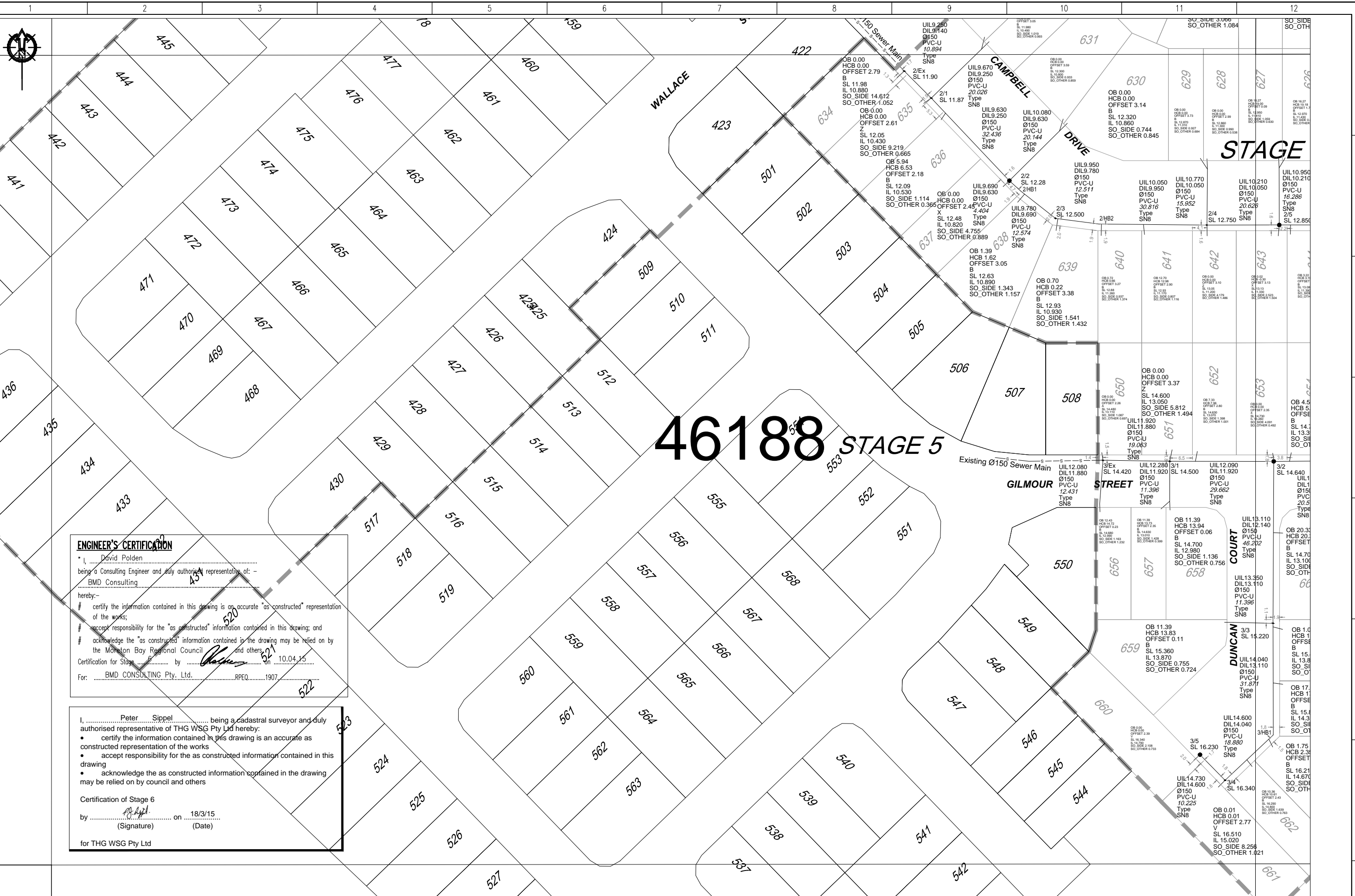
I, Peter Sippel being a cadastral surveyor and duly authorised representative of THG WSG Pty Ltd hereby:
 • certify the information contained in this drawing is an accurate as constructed representation of the works
 • accept responsibility for the as constructed information contained in this drawing
 • acknowledge the as constructed information contained in the drawing may be relied on by council and others
 Certification of Stage 6
 by [Signature] on 18/3/15
 (Signature) (Date)
 for THG WSG Pty Ltd

46022

Future Stage 7



DRAWING REVISIONS		REFERENCE DRAWINGS		DESIGN FILE No.	DESIGNED	<p>THIS WORK WAS PREPARED BY: THG WSG PTY LTD</p> <p>SCALE 1:500 ORIGINAL SIZE A1</p>	<p>MORETON BAY REGIONAL COUNCIL CABOOLTURE DISTRICT OFFICE 2 HASKING STREET CABOOLTURE QLD 4510 PO BOX 159 CABOOLTURE QLD 4510 Telephone: (07) 5433 0100 Fax: (07) 5433 4000</p>	<p>STAGE 6, CAPESTONE AS CONSTRUCTED SEWER RETICULATION</p>		MBRC SUBDIVISION REFERENCE		
REV.	REVISION DESCRIPTION	DRG. No.	DESCRIPTION	CONSTRUCT. No.	DATE					DA/29021/2014/V23R	No. 2 OF 4 PLANS	
A	Original			247406_6 AS	18/3/15					ASCAN GRID NUMBER		REV.
				FIELD BOOK	18/3/15					46022		A
				LOG BOOK								
				LEVEL DATUM	AHD							
				DATUM	PM177891							



46188 STAGE 5

ENGINEER'S CERTIFICATION
 I, David Polden, being a Consulting Engineer and duly authorised representative of: - BMD Consulting hereby:-
 # certify the information contained in this drawing is an accurate "as constructed" representation of the works;
 # accept responsibility for the "as constructed" information contained in this drawing; and
 # acknowledge the "as constructed" information contained in the drawing may be relied on by the Moreton Bay Regional Council and others.
 Certification for Stage 5 by [Signature] on 10.04.15
 For: BMD CONSULTING Pty. Ltd. RPEQ. 1907

I, Peter Sippel, being a cadastral surveyor and duly authorised representative of THG WSG Pty Ltd hereby:
 • certify the information contained in this drawing is an accurate as constructed representation of the works
 • accept responsibility for the as constructed information contained in this drawing
 • acknowledge the as constructed information contained in the drawing may be relied on by council and others
 Certification of Stage 6
 by [Signature] on 18/3/15
 (Signature) (Date)
 for THG WSG Pty Ltd

DRAWING REVISIONS		REFERENCE DRAWINGS		DESIGN FILE No.	DESIGNED
REV.	REVISION DESCRIPTION	DRG. No.	DESCRIPTION	CONSTRUCT. No.	DATE
A	Original			247406_6 AS	18/3/15
				FIELD BOOK	CHECKED EJM
				LOG BOOK	DATE 18/3/15
				LEVEL DATUM	DATE 18/3/15
				DATUM	PM177891

THIS WORK WAS PREPARED BY:
THG WSG PTY LTD

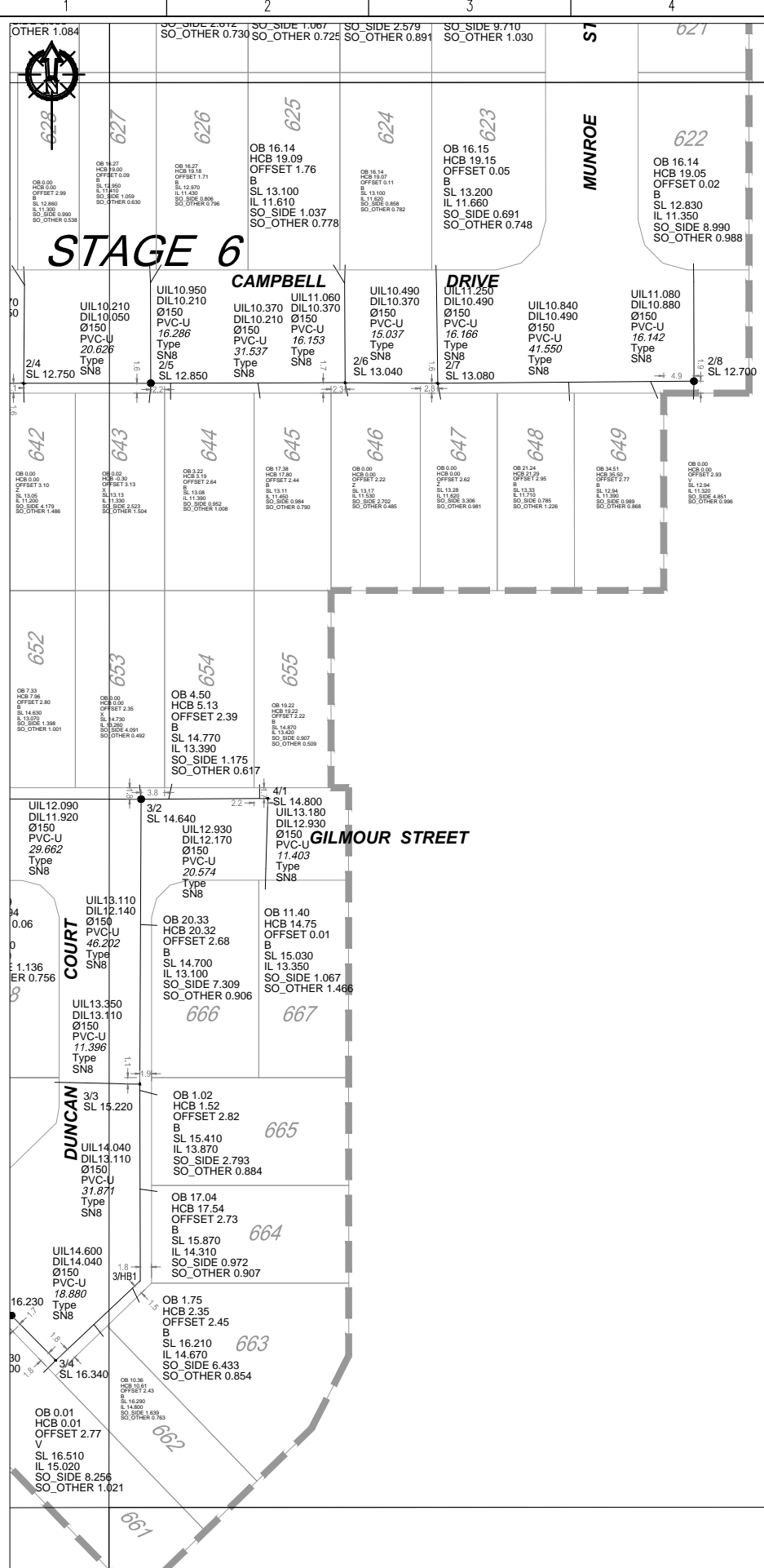
SCALE 1:500 ORIGINAL SIZE A1

MORETON BAY REGIONAL COUNCIL
 CABOOLTURE DISTRICT OFFICE
 2 HASKING STREET CABOOLTURE QLD 4510
 PO BOX 159 CABOOLTURE QLD 4510
 Telephone: (07) 5433 0100
 Fax: (07) 5433 4000

STAGE 6, CAPESTONE AS CONSTRUCTED SEWER RETICULATION

MBRC SUBDIVISION REFERENCE	
DA/29021/2014/V23R	
No. 3 OF 4 PLANS	
ASCAN GRID NUMBER	REV.
46188	A

46189



ENGINEER'S CERTIFICATION

I, David Polden being a Consulting Engineer and duly authorised representative of: - BMD Consulting hereby:-

- certify the information contained in this drawing is an accurate "as constructed" representation of the works;
- accept responsibility for the "as constructed" information contained in this drawing; and
- acknowledge the "as constructed" information contained in the drawing may be relied on by the Moreton Bay Regional Council and others.

Certification for Stage 6 by David Polden on 10.04.15

For: BMD CONSULTING Pty. Ltd. RPEQ 1907

I, Peter Sippel being a cadastral surveyor and duly authorised representative of THG WSG Pty Ltd hereby:


- certify the information contained in this drawing is an accurate as constructed representation of the works
- accept responsibility for the as constructed information contained in this drawing
- acknowledge the as constructed information contained in the drawing may be relied on by council and others

Certification of Stage 6
by Peter Sippel on 18/3/15
(Signature) (Date)
for THG WSG Pty Ltd

DRAWING REVISIONS		REFERENCE DRAWINGS		DESIGN FILE No.	DESIGNED
REV.	REVISION DESCRIPTION	DRG. No.	DESCRIPTION	CONSTRUCT. No.	DATE
A	Original			247406_6_AS	EJM
				FIELD BOOK	DATE 18/3/15
				LOG BOOK	CHECKED EJM
				LEVEL DATUM	DATE 18/3/15
				DATUM	AHD
					PM177891

THIS WORK WAS PREPARED BY:
THG WSG PTY LTD

SCALE 1:500 ORIGINAL SIZE A1



MORETON BAY REGIONAL COUNCIL
CABOOLTURE DISTRICT OFFICE
2 HASKING STREET CABOOLTURE QLD 4510
PO BOX 159 CABOOLTURE QLD 4510
Telephone: (07) 5433 0100
Fax: (07) 5433 4000

STAGE 6, CAPESTONE
AS CONSTRUCTED
SEWER RETICULATION

MBRC SUBDIVISION REFERENCE	
DA/29021/2014/V23R	
No. 4 OF 4 PLANS	
ASCAN GRID NUMBER	REV.
46189	A