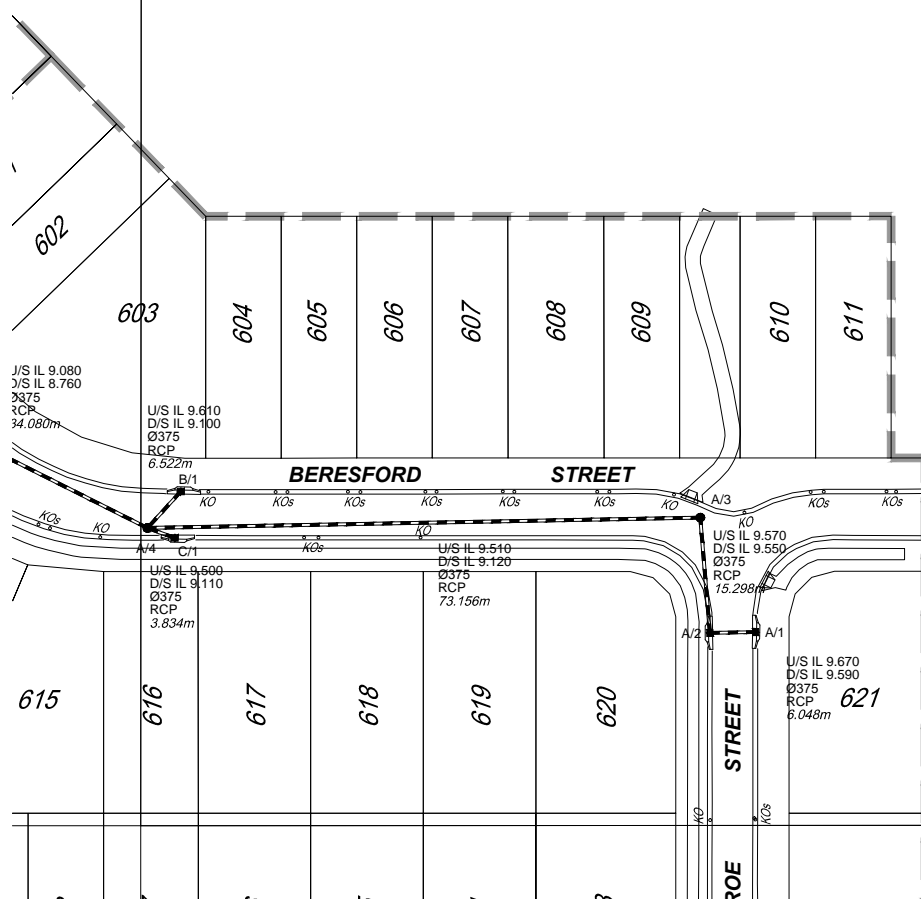


# 46022



I, ..... Peter ..... Sippl ..... being a cadastral surveyor and duly authorised representative of THG WSG Pty Ltd hereby:

- certify the information contained in this drawing is an accurate as constructed representation of the works
- accept responsibility for the as constructed information contained in this drawing
- acknowledge the as constructed information contained in the drawing may be relied on by council and others

Certification of Stage 6 by ..... *P. Sippl* ..... on 18/3/15  
 (Signature) (Date)

for THG WSG Pty Ltd

**ENGINEER'S CERTIFICATION**

\* I, ..... David Polden .....  
 being a Consulting Engineer and duly authorised representative of: -  
 BMD Consulting  
 hereby:-


- # certify the information contained in this drawing is an accurate "as constructed" representation of the works;
- # accept responsibility for the "as constructed" information contained in this drawing; and
- # acknowledge the "as constructed" information contained in the drawing may be relied on by the Moreton Bay Regional Council and others.

Certification for Stage 6 ..... by ..... *David Polden* ..... on 10.04.15  
 For: ..... BMD CONSULTING Pty. Ltd. ..... RPEQ ..... 1907.....

DRAWING REVISIONS		REFERENCE DRAWINGS		DESIGN FILE No.	DESIGNED
REV.	REVISION DESCRIPTION	DRG. No.	DESCRIPTION	CONSTRUCT. No.	DATE
A	Original			247406_6 ARD	DRAWN EJM
				FIELD BOOK	DATE 18/3/15
				LOG BOOK	CHECKED EJM
				LEVEL DATUM	DATE 18/3/15
				DATUM	PM137449

**THIS WORK WAS PREPARED BY:**  
**THG WSG PTY LTD**

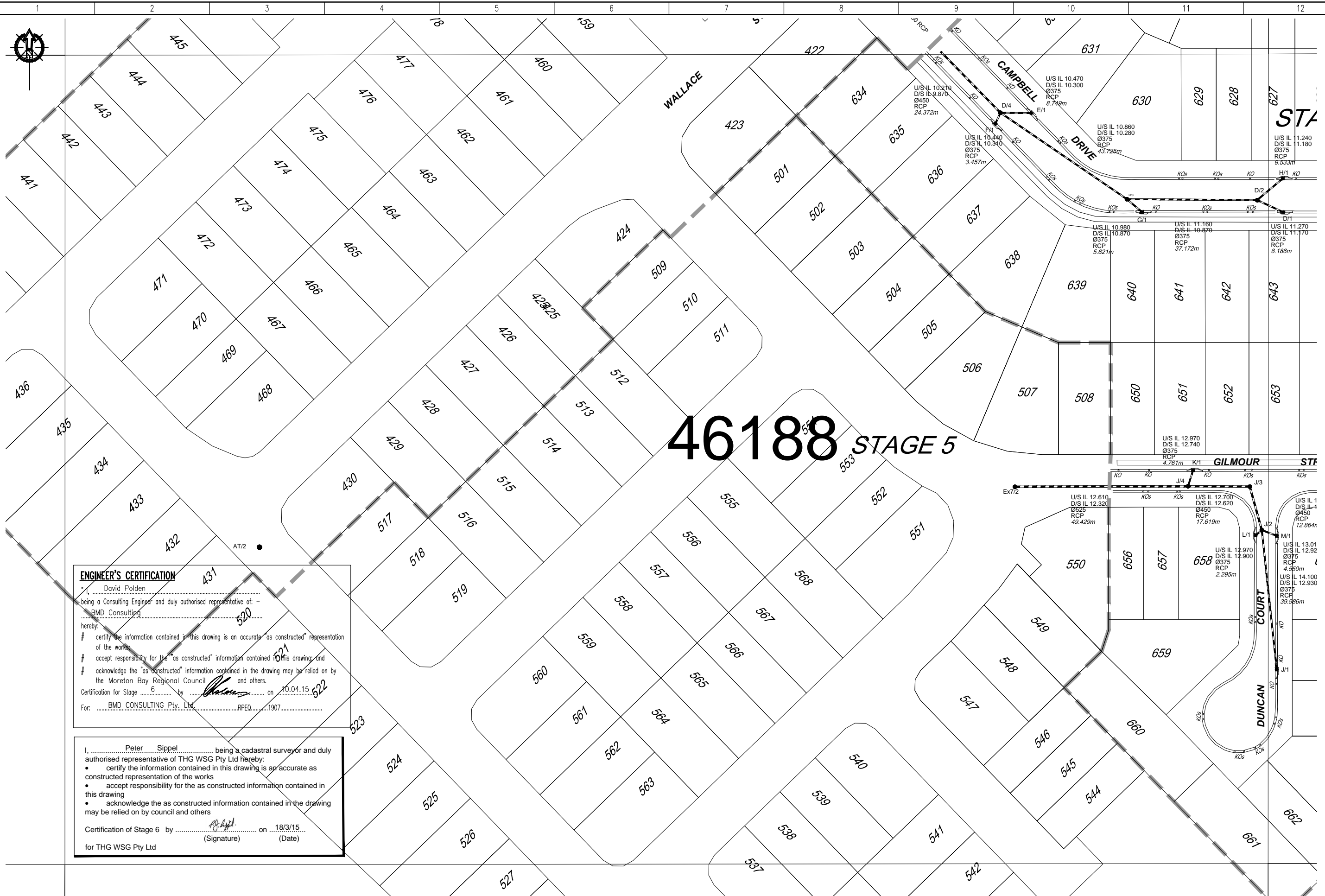
SCALE 1:500 ORIGINAL SIZE A1



**MORETON BAY REGIONAL COUNCIL**  
 CABOOLTURE DISTRICT OFFICE  
 2 HASKING STREET CABOOLTURE QLD 4510  
 PO BOX 159 CABOOLTURE QLD 4510  
 Telephone: (07) 5433 0100  
 Fax: (07) 5433 4000

**STAGE 6, CAPESTONE  
 AS CONSTRUCTED  
 ROADS AND DRAINAGE**

MBRC SUBDIVISION REFERENCE	
DA/29021/2014/V23R	
No. 2 OF 4 PLANS	
ASCAN GRID NUMBER	REV.
46022	A



# 46188 STAGE 5


**ENGINEER'S CERTIFICATION**  
 I, David Polden, being a Consulting Engineer and duly authorised representative of: - BMD Consulting hereby:  
 # certify the information contained in this drawing is an accurate "as constructed" representation of the works.  
 # accept responsibility for the "as constructed" information contained in this drawing, and  
 # acknowledge the "as constructed" information contained in the drawing may be relied on by the Moreton Bay Regional Council and others.  
 Certification for Stage 6 by *[Signature]* on 10.04.15  
 For: BMD CONSULTING Pty. Ltd. RPEQ 1907

I, Peter Sippel, being a cadastral surveyor and duly authorised representative of THG WSG Pty Ltd hereby:  
 • certify the information contained in this drawing is an accurate as constructed representation of the works  
 • accept responsibility for the as constructed information contained in this drawing  
 • acknowledge the as constructed information contained in the drawing may be relied on by council and others  
 Certification of Stage 6 by *[Signature]* on 18/3/15  
 (Signature) (Date)  
 for THG WSG Pty Ltd

DRAWING REVISIONS		REFERENCE DRAWINGS		DESIGN FILE No.	DESIGNED
REV.	REVISION DESCRIPTION	DRG. No.	DESCRIPTION	CONSTRUCT. No.	DATE
A	Original			247406_6 ARD	EJM
				FIELD BOOK	DATE 18/3/15
				LOG BOOK	CHECKED EJM
				LEVEL DATUM	DATE 18/3/15
				DATUM	PM137449

**THIS WORK WAS PREPARED BY:**  
**THG WSG PTY LTD**

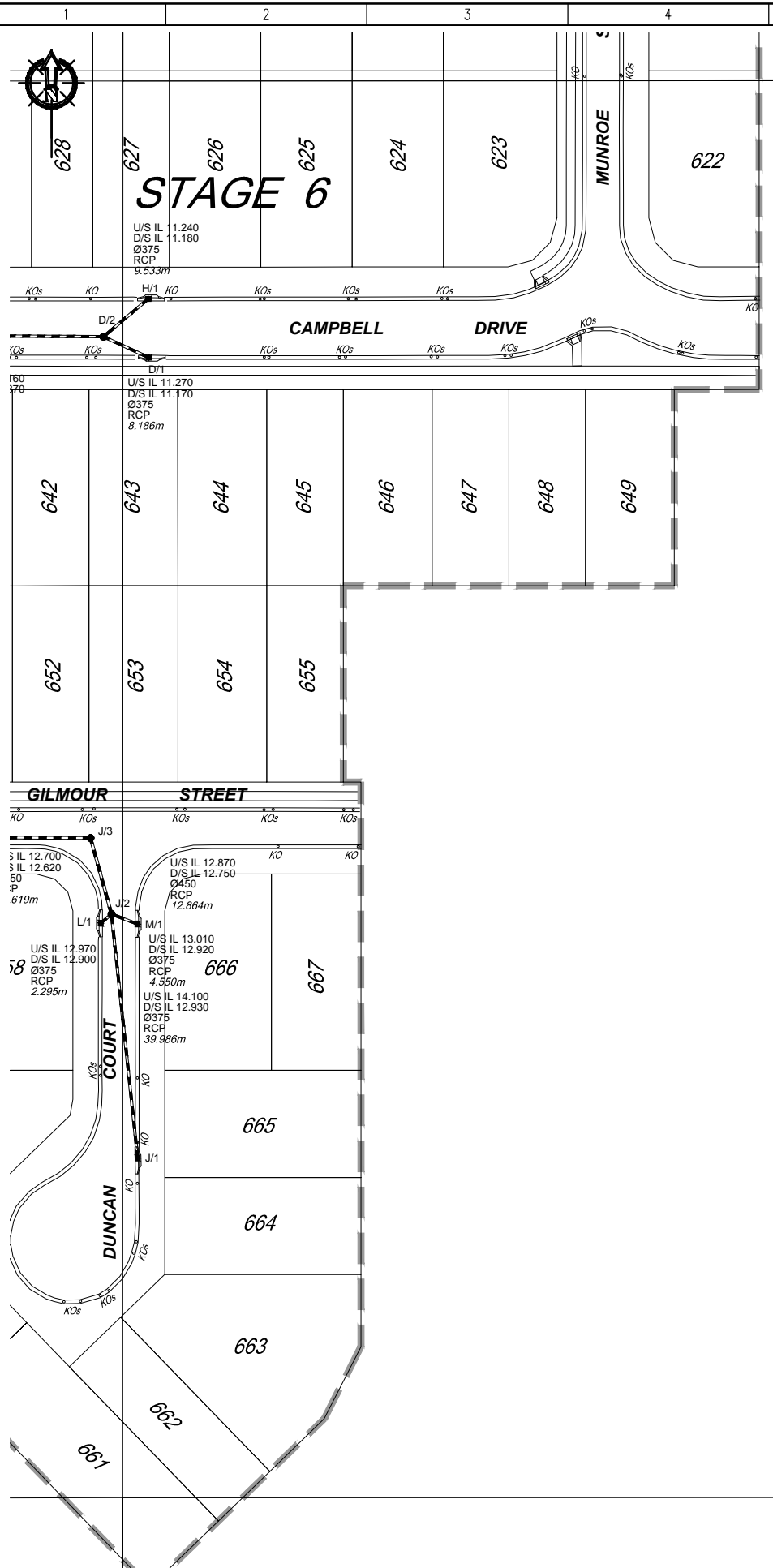
SCALE 1:500 ORIGINAL SIZE A1



**MORETON BAY REGIONAL COUNCIL**  
 CABOOLTURE DISTRICT OFFICE  
 2 HASKING STREET CABOOLTURE QLD 4510  
 PO BOX 159 CABOOLTURE QLD 4510  
 Telephone: (07) 5433 0100  
 Fax: (07) 5433 4000

**STAGE 6, CAPESTONE  
 AS CONSTRUCTED  
 ROADS AND DRAINAGE**

MBRC SUBDIVISION REFERENCE	
DA/29021/2014/V23R	
No. 3 OF 4 PLANS	
ASCAN GRID NUMBER	REV.
46188	A



# 46189

**ENGINEER'S CERTIFICATION**


I, David Polden being a Consulting Engineer and duly authorised representative of: -  
BMD Consulting  
 hereby:-  
 # certify the information contained in this drawing is an accurate "as constructed" representation of the works;  
 # accept responsibility for the "as constructed" information contained in this drawing; and  
 # acknowledge the "as constructed" information contained in the drawing may be relied on by the Moreton Bay Regional Council and others.  
 Certification for Stage 6 by [Signature] on 10.04.15  
 For: BMD CONSULTING Pty. Ltd. RPEQ 1907

I, Peter Sippel being a cadastral surveyor and duly authorised representative of THG WSG Pty Ltd hereby:  
 • certify the information contained in this drawing is an accurate as constructed representation of the works  
 • accept responsibility for the as constructed information contained in this drawing  
 • acknowledge the as constructed information contained in the drawing may be relied on by council and others  
 Certification of Stage 6 by [Signature] on 18/3/15  
 (Signature) (Date)  
 for THG WSG Pty Ltd

DRAWING REVISIONS		REFERENCE DRAWINGS		DESIGN FILE No.	DESIGNED
REV.	REVISION DESCRIPTION	DRG. No.	DESCRIPTION	CONSTRUCT. No.	DATE
A	Original			247406_6 ARD	EJM
				FIELD BOOK	DATE 18/3/15
				LOG BOOK	CHECKED EJM
				LEVEL DATUM	DATE 18/3/15
				DATUM	PM137449

**THIS WORK WAS PREPARED BY:**  
**THG WSG PTY LTD**

SCALE 1:500 ORIGINAL SIZE A1



**MORETON BAY REGIONAL COUNCIL**  
 CABOOLTURE DISTRICT OFFICE  
 2 HASKING STREET CABOOLTURE QLD 4510  
 PO BOX 159 CABOOLTURE QLD 4510  
 Telephone: (07) 5433 0100  
 Fax: (07) 5433 4000

**STAGE 6, CAPESTONE  
 AS CONSTRUCTED  
 ROADS AND DRAINAGE**

MBRC SUBDIVISION REFERENCE	
DA/29021/2014/V23R	
No. 4 OF 4 PLANS	
ASCAN GRID NUMBER	REV.
46189	A



I, Peter Sippel being a cadastral surveyor and duly authorised representative of THG WSG Pty Ltd hereby:

- certify the information contained in this drawing is an accurate as constructed representation of the works
- accept responsibility for the as constructed information contained in this drawing
- acknowledge the as constructed information contained in the drawing may be relied on by council and others

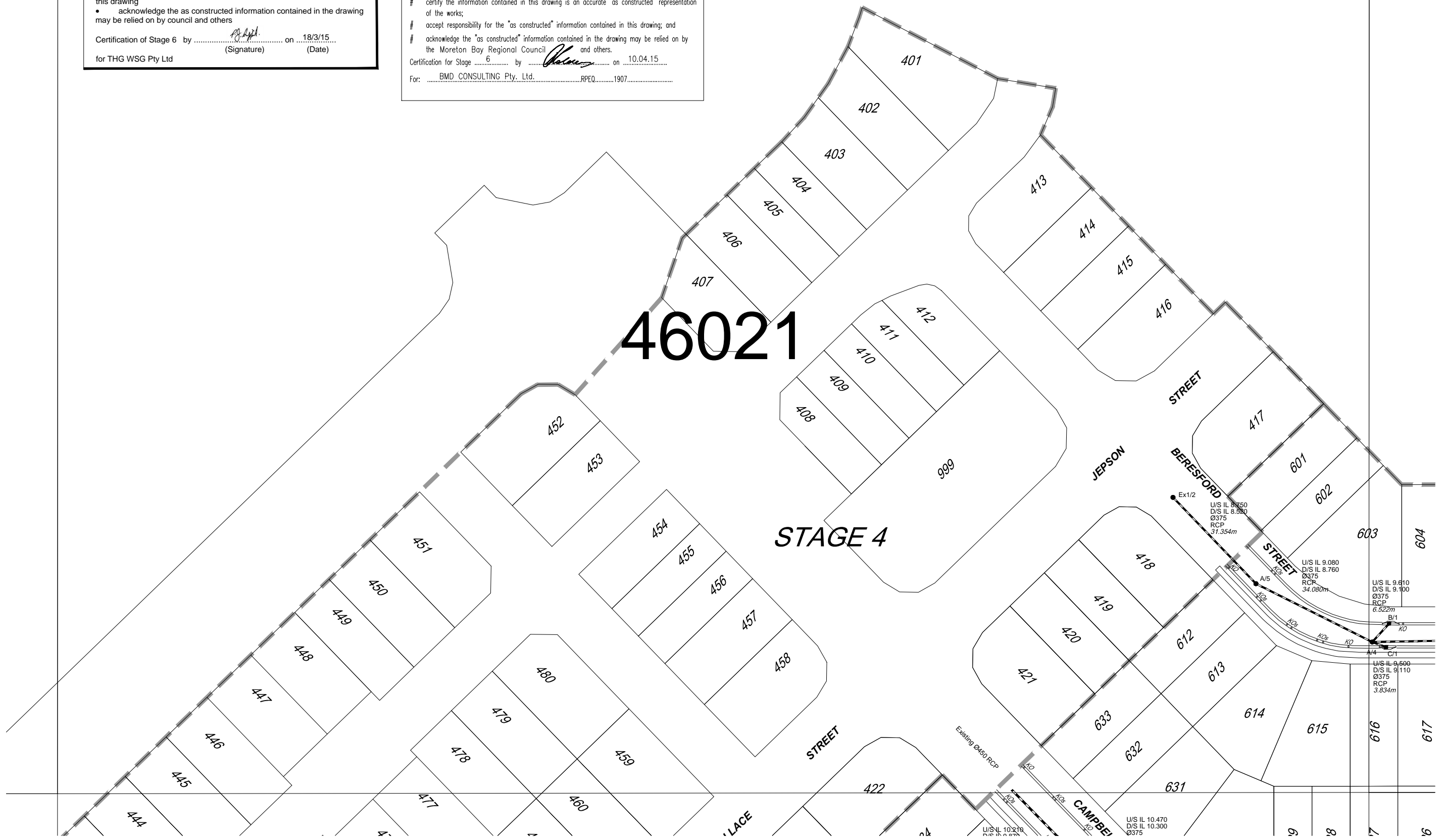
Certification of Stage 6 by Peter Sippel on 18/3/15  
(Signature) (Date)  
for THG WSG Pty Ltd

**ENGINEER'S CERTIFICATION**

"I, David Polden  
being a Consulting Engineer and duly authorised representative of: -  
BMD Consulting  
hereby:-

- certify the information contained in this drawing is an accurate "as constructed" representation of the works;
- accept responsibility for the "as constructed" information contained in this drawing; and
- acknowledge the "as constructed" information contained in the drawing may be relied on by the Moreton Bay Regional Council and others.

Certification for Stage 6 by David Polden on 10.04.15  
For: BMD CONSULTING Pty. Ltd. RPEQ 1907



DRAWING REVISIONS		REFERENCE DRAWINGS		DESIGN FILE No.	DESIGNED
REV.	REVISION DESCRIPTION	DRG. No.	DESCRIPTION	CONSTRUCT. No.	DATE
A	Original			247406_6 ARD	18/3/15
				FIELD BOOK	18/3/15
				LOG BOOK	
				LEVEL DATUM	AHD
				DATUM	PM137449

**THIS WORK WAS PREPARED BY:**  
**THG WSG PTY LTD**

SCALE 1:500 ORIGINAL SIZE A1

**MORETON BAY REGIONAL COUNCIL**  
 CABOOLTURE DISTRICT OFFICE  
 2 HASKING STREET CABOOLTURE QLD 4510  
 PO BOX 159 CABOOLTURE QLD 4510  
 Telephone: (07) 5433 0100  
 Fax: (07) 5433 4000

**STAGE 6, CAPESTONE**  
**AS CONSTRUCTED**  
**ROADS AND DRAINAGE**

MBRC SUBDIVISION REFERENCE	
DA/29021/2014/V23R	
No. 1 OF 4 PLANS	
ASCAN GRID NUMBER	REV.
46021	A