



I, Peter Sippel, being a cadastral surveyor and duly authorised representative of Queensland Surveying Pty Ltd hereby:

- certify the information contained in this drawing is an accurate as constructed representation of the works
- accept responsibility for the as constructed information contained in this drawing
- acknowledge the as constructed information contained in the drawing may be relied on by council and others

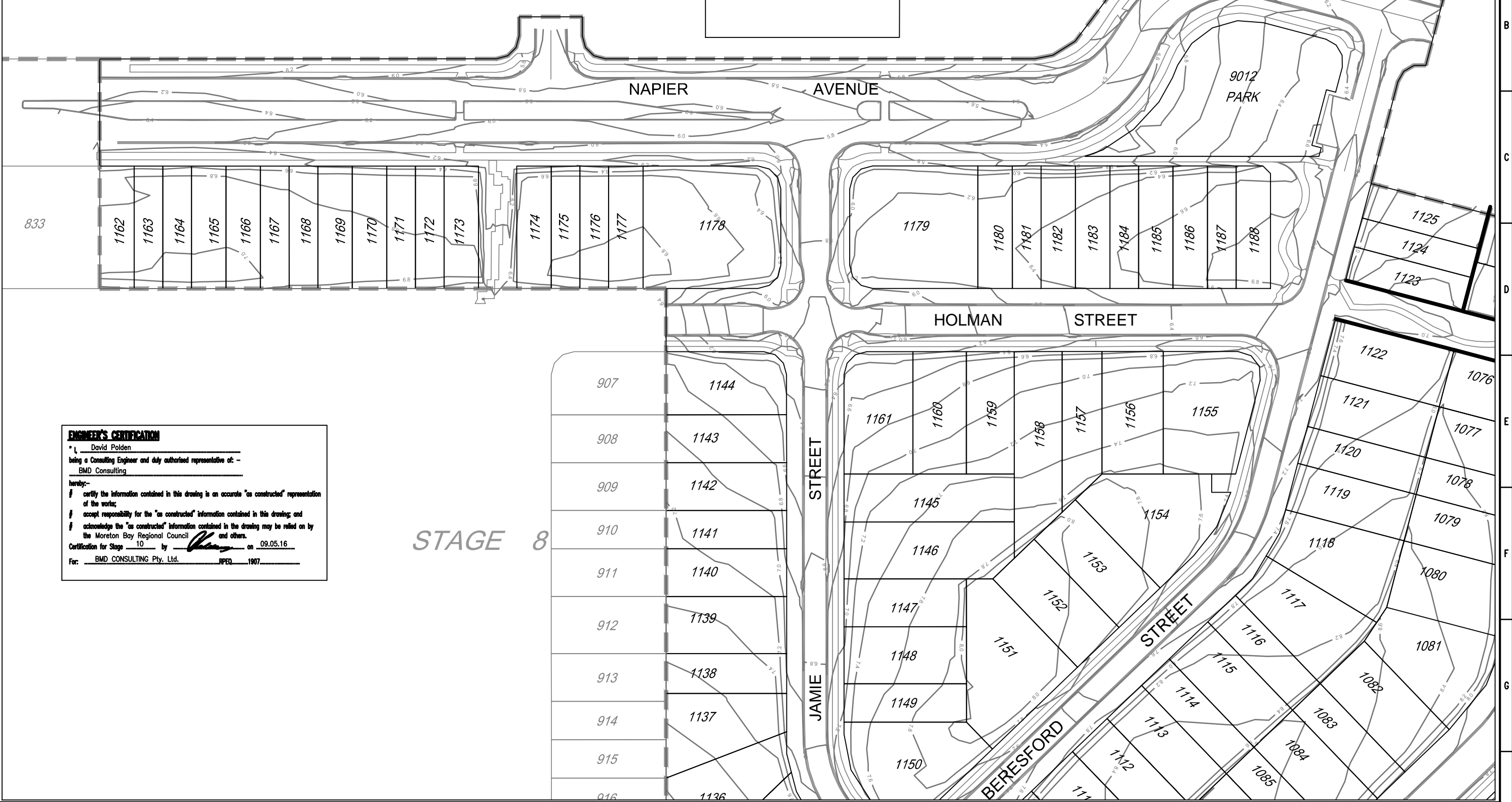
Certification by *P. Sippel* on 24/4/16
(Signature) (Date)
for Queensland Surveying Pty Ltd

LEGEND

8.8 — AS CONSTRUCTED CONTOURS
(Interval 0.2m)

— RETAINING WALL

FUTURE STAGE 13



ENGINEER'S CERTIFICATION

I, David Polden, being a Consulting Engineer and duly authorised representative of: - BMD Consulting hereby:

- certify the information contained in this drawing is an accurate "as constructed" representation of the works;
- accept responsibility for the "as constructed" information contained in this drawing; and
- acknowledge the "as constructed" information contained in the drawing may be relied on by the Moreton Bay Regional Council and others.

Certification for Stage 10 by *D. Polden* on 09.05.16
For: BMD CONSULTING Pty. Ltd. RPED 1907

STAGE 8

DRAWING REVISIONS		REFERENCE DRAWINGS		DESIGN FILE No.	DESIGNED
REV.	REVISION DESCRIPTION	DRG. No.	DESCRIPTION	CONSTRUCT. No.	DATE
A	Original				

DESIGNED	DATE	DESIGNED	DATE
EJM	24/4/16	EJM	24/4/16

LOG BOOK	CHECKED	DATE
	EJM	24/4/16

LEVEL DATUM	AHD
DATUM	PM177891

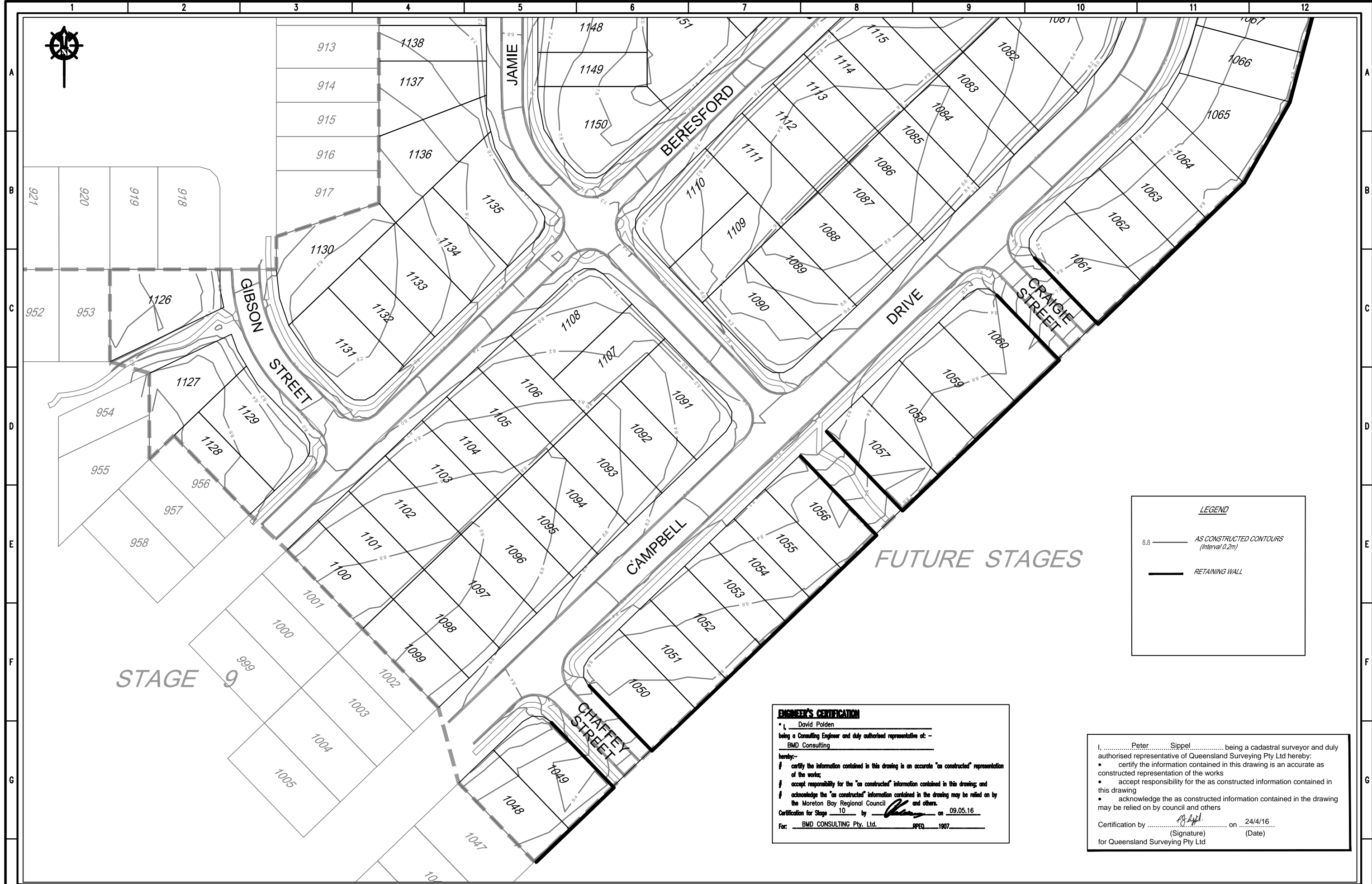
**THIS WORK WAS PREPARED BY:
QUEENSLAND SURVEYING PTY LTD**

SCALE 1:500 ORIGINAL SIZE A1

MORETON BAY REGIONAL COUNCIL
CABOOLTURE DISTRICT OFFICE
2 HASKING STREET CABOOLTURE QLD 4510
PO BOX 159 CABOOLTURE QLD 4510
Telephone: (07) 5433 0100
Fax: (07) 5433 4000

**STAGE 10, CAPESTONE
AS CONSTRUCTED
EARTHWORKS**

MBRC SUBMISSION REFERENCE	
DA/30100/2015/V23R	No. 1 OF 3 PLANS
ASCON GRID NUMBER	REV.
	A



LEGEND

8.8 — AS CONSTRUCTED CONTOURS
(Interval 0.2m)

— RETAINING WALL

ENGINEER'S CERTIFICATION

I, David Polden
being a Consulting Engineer and duly authorized representative of: -
BMD Consulting

herby:-

I certify the information contained in this drawing is an accurate "as constructed" representation of the works;

I accept responsibility for the "as constructed" information contained in this drawing; and

I acknowledge the "as constructed" information contained in the drawing may be relied on by the Moreton Bay Regional Council and others.

Certification for Stage 10 by [Signature] on 09.05.16

For: BMD CONSULTING Pty. Ltd. RPER 1907

I, Peter Sippel, being a cadastral surveyor and duly authorised representative of Queensland Surveying Pty Ltd hereby:

- certify the information contained in this drawing is an accurate as constructed representation of the works
- accept responsibility for the as constructed information contained in this drawing
- acknowledge the as constructed information contained in the drawing may be relied on by council and others

Certification by [Signature] on 24/4/16
(Signature) (Date)

for Queensland Surveying Pty Ltd

STAGE 9

FUTURE STAGES

DRAWING REVISIONS		REFERENCE DRAWINGS		DESIGN FILE No.	DESIGNED
REV.	REVISION DESCRIPTION	DRG. No.	DESCRIPTION	CONSTRUCT. No.	DATE
A	Original			30105-100100 A/E	EJM 24/4/16
					EJM 24/4/16
				AHD	
				PM177891	

**THIS WORK WAS PREPARED BY:
QUEENSLAND SURVEYING PTY LTD**



MORETON BAY REGIONAL COUNCIL
CABOOLTURE DISTRICT OFFICE
2 HASKING STREET CABOOLTURE QLD 4510
PO BOX 159 CABOOLTURE QLD 4510
Telephone: (07) 5433 0100
Fax: (07) 5433 4000

**STAGE 10, CAPESTONE
AS CONSTRUCTED
EARTHWORKS**

SCALE 1:500 ORIGINAL SIZE A1

MBRC SUBDIVISION REFERENCE	
DA/30100/2015/V23R	
No. 3 OF 3 PLANS	
ASCAN GRID NUMBER	REV.
	A